

Globe Valve

SICCA 800-4500 GLF

Class 800-4500
NPS 1/4-2 Inches

Type Series Booklet



Legal information/Copyright

Type Series Booklet SICCA 800-4500 GLF

All rights reserved. The contents provided herein must neither be distributed, copied, reproduced, edited or processed for any other purpose, nor otherwise transmitted, published or made available to a third party without the manufacturer's express written consent.

Subject to technical modification without prior notice.

© KSB Aktiengesellschaft, Frankenthal 13/12/2017

Contents

Globe Valves..... 4

- Globe Valves to ANSI/ASME with Gland Packing 4
 - SICCA 800-4500 GLF 4
 - Main applications..... 4
 - Fluids handled 4
 - Operating data..... 4
 - Body materials..... 4
 - Design details 4
 - Product benefits..... 5
 - Related documents 5
 - Purchase order specifications 5
 - Pressure/temperature ratings..... 6
 - Materials..... 8
 - Dimensions and weights..... 10
 - Dimensions and weights of SICCA 800 GLF 10
 - Dimensions and weights of SICCA 1500/2500 GLF 12
 - Dimensions and weights of SICCA 4500 GLF 13
 - Installation information..... 13

Globe Valves

Globe Valves to ANSI/ASME with Gland Packing

SICCA 800-4500 GLF



Main applications

- Boiler feed applications
- Fossil-fuelled power stations
- Petrochemical industry
- Pipelines and tank farms
- Refineries
- Process engineering

Fluids handled

- Service water
- Steam
- Fluids containing gas
- Gas
- High-temperature hot water
- Heating water
- Condensate
- Cooling water
- Fire-fighting water
- Fluids containing mineral oils
- Oil
- Lubricants
- Grey water
- Feed water
- Thermal oil
- Wash water

Operating data

Operating properties

| Characteristic | Value |
|-----------------------------------|------------------|
| Nominal pressure | Class 800 - 4500 |
| Nominal size [inch] | NPS ¼ - 2 |
| Max. permissible pressure [bar] | 776 |
| Max. permissible pressure [psi] | 11250 |
| Min. permissible temperature [°C] | ≥ 0 |
| Max. permissible temperature [°C] | ≤ +816 |
| Min. permissible temperature [°F] | ≥ 0 |
| Max. permissible temperature [°F] | ≤ +1500 |

Selection as per pressure/temperature ratings (⇒ Page 6)

Body materials

Overview of available materials

| Material | Temperature limit | |
|----------------|-------------------|--------|
| | [°C] | [°F] |
| ASTM A105 | ≤ 425 | ≤ 800 |
| ASTM A182 304L | ≤ 450 | ≤ 850 |
| ASTM A182 316L | ≤ 450 | ≤ 850 |
| ASTM A182 F22 | ≤ 593 | ≤ 1100 |
| ASTM A182 F91 | ≤ 650 | ≤ 1200 |
| ASTM A182 F304 | ≤ 816 | ≤ 1500 |
| ASTM A182 F316 | ≤ 816 | ≤ 1500 |
| ASTM A350 LF2 | ≤ 425 | ≤ 800 |

Design details

Design

- Globe valve to API 602 (Class 800/1500)
- Globe valve to ASME B16.34 (Class 2500/4500)
- Tested to API 598
- Body made of forged steel
- Straight-way pattern
- Bolted bonnet (Class 800)
- Seal-welded body/bonnet joint (Class 1500/2500/4500)
- Hard-faced seat/disc interface (13 % chrome steel/Stellite)
- Fully confined bonnet gasket (Class 800)
- Two-piece self-aligning gland follower
- Graphite gland packing with braided graphite packing end rings
- Solid valve disc
- Stem with burnished shank
- Rotating stem
- Rising stem
- Rising handwheel
- Outside screw
- Outside yoke
- Integral ST6 hard-faced seat ring
- The valves satisfy the safety requirements of Annex I of the European Pressure Equipment Directive 2014/68/EU (PED) for fluids in Groups 1 and 2.

Variants

- Position indicator
- Locking device
- Electric actuators (Class 1500/2500/4500)
- Threaded ends
- Butt weld ends

Product benefits

- Long service life and high functional reliability
 - Two-piece self-aligning gland follower ensures even compression of packing rings.
 - Hard-faced body seat made of wear-resistant and corrosion-resistant 13 % chrome steel or Stellite.
 - Inconel-reinforced braided packing end rings offer smooth wiping action and prevent extrusion of graphite.
 - Burnished stem and smooth stuffing box surfaces extend the service life of the gland packing.
- Additional features ensure safe sealing to atmosphere:
 - Additional safety and blow-out protection by standard back seat.
 - Fully confined cover gasket with controlled compression ensures leak-proof joint.
 - Welded body/cover joint provides added safety at high operating pressures and operating temperatures.
 - Die-formed endless graphite packing rings reliably seal the stem passage.
- Reliable, tight shut-off
 - Zero leakage thanks to perfect contact at seat/disc interface.

Related documents

Information/documents

| Document | Reference number |
|------------------|------------------|
| Operating manual | 0500.80 |

Purchase order specifications

Please specify the following information in all enquiries or purchase orders:

1. Type
2. Class
3. Nominal size
4. Design pressure
5. Design temperature
6. Operating pressure
7. Operating temperature
8. Differential pressure
9. Material
10. Fluid handled
11. Flow rate
12. Pipe connection
13. Pipe schedule
14. Variants
15. Reference number

Always indicate the original serial number and the year of construction when ordering spare parts.

Pressure/temperature ratings

Permissible operating pressures [bar] (in acc. with ASME B16.34 Standard Class)

| Class | Material | [°C] | | | | | | | | | | | | | | | | | | | | | | | |
|-------------------|--------------------------|------------|-----|-----|-----|-----|-----|-----|-----|-----|-----|-----|-----|-----|-----|-----|-----|-----|-----|-----|-----|-----|-----|-----|-----|
| | | -29 to +38 | 93 | 149 | 204 | 260 | 316 | 343 | 371 | 399 | 427 | 454 | 482 | 510 | 538 | 566 | 593 | 621 | 649 | 677 | 704 | 732 | 760 | 788 | 816 |
| 150 | A105 ¹⁾ | 20 | 18 | 16 | 14 | 12 | 10 | 9 | 8 | 7 | 6 | 5 | 3 | 2 | 1 | - | - | - | - | - | - | - | - | - | - |
| 300 | A350 LF2 | 51 | 47 | 45 | 44 | 42 | 39 | 38 | 37 | 35 | 28 | 22 | 16 | 9 | 6 | - | - | - | - | - | - | - | - | - | - |
| 600 | | 102 | 94 | 90 | 87 | 83 | 78 | 76 | 73 | 70 | 57 | 44 | 32 | 19 | 12 | - | - | - | - | - | - | - | - | - | - |
| 800 ²⁾ | | 136 | 125 | 120 | 117 | 111 | 105 | 101 | 98 | 93 | 76 | 59 | 42 | 25 | 16 | - | - | - | - | - | - | - | - | - | - |
| 1500 | | 256 | 234 | 226 | 219 | 208 | 196 | 189 | 184 | 175 | 142 | 110 | 79 | 47 | 30 | - | - | - | - | - | - | - | - | - | - |
| 2500 | | 425 | 390 | 376 | 364 | 347 | 326 | 315 | 305 | 292 | 237 | 183 | 132 | 79 | 49 | - | - | - | - | - | - | - | - | - | - |
| 4500 | | 766 | 702 | 753 | 730 | 623 | 587 | 568 | 549 | 525 | 426 | 289 | 238 | 142 | - | - | - | - | - | - | - | - | - | - | - |
| 150 | A182 F22 ²⁾ | 20 | 18 | 16 | 14 | 12 | 10 | 9 | 8 | 7 | 6 | 5 | 3 | 2 | 1 | 1 | 1 | 1 | 1 | 1 | - | - | - | - | - |
| 300 | | 52 | 52 | 50 | 49 | 46 | 42 | 41 | 39 | 37 | 35 | 33 | 31 | 27 | 18 | 12 | 8 | 5 | 3 | - | - | - | - | - | - |
| 600 | | 103 | 103 | 100 | 97 | 92 | 83 | 81 | 78 | 73 | 70 | 67 | 62 | 52 | 37 | 24 | 15 | 9 | 6 | - | - | - | - | - | - |
| 800 ²⁾ | | 138 | 138 | 134 | 130 | 122 | 111 | 108 | 105 | 98 | 93 | 90 | 83 | 71 | 49 | 32 | 20 | 12 | 8 | - | - | - | - | - | - |
| 1500 | | 259 | 259 | 251 | 243 | 229 | 209 | 203 | 196 | 183 | 175 | 168 | 155 | 133 | 92 | 60 | 38 | 24 | 14 | - | - | - | - | - | - |
| 2500 | | 431 | 431 | 419 | 405 | 382 | 348 | 338 | 326 | 305 | 292 | 280 | 258 | 222 | 154 | 100 | 63 | 39 | 24 | - | - | - | - | - | - |
| 4500 | | 776 | 773 | 753 | 730 | 687 | 626 | 609 | 581 | 549 | 525 | 504 | 465 | 400 | 277 | 181 | 113 | 71 | 42 | - | - | - | - | - | - |
| 1500 | A182 F91 | 259 | 259 | 251 | 243 | 229 | 209 | 203 | 196 | 183 | 175 | 168 | 155 | 133 | 125 | 124 | 104 | 77 | 50 | - | - | - | - | - | - |
| 2500 | | 431 | 431 | 419 | 405 | 382 | 347 | 338 | 326 | 305 | 292 | 280 | 258 | 222 | 209 | 207 | 173 | 128 | 83 | - | - | - | - | - | - |
| 4500 | | 776 | 776 | 753 | 730 | 687 | 625 | 608 | 587 | 550 | 525 | 504 | 465 | 400 | 376 | 372 | 312 | 231 | 149 | - | - | - | - | - | - |
| 150 | A182 F316L A182 F304L | 16 | 13 | 12 | 11 | 10 | 10 | 9 | 8 | 8 | 6 | 4 | - | - | - | - | - | - | - | - | - | - | - | - | - |
| 300 | | 41 | 35 | 31 | 29 | 27 | 26 | 25 | 25 | 24 | 24 | 23 | - | - | - | - | - | - | - | - | - | - | - | - | - |
| 600 | | 83 | 70 | 63 | 58 | 54 | 51 | 50 | 50 | 49 | 48 | 47 | - | - | - | - | - | - | - | - | - | - | - | - | - |
| 800 | | 110 | 94 | 84 | 77 | 72 | 68 | 67 | 66 | 65 | 63 | 62 | - | - | - | - | - | - | - | - | - | - | - | - | - |
| 1500 | | 207 | 176 | 157 | 145 | 136 | 128 | 126 | 124 | 122 | 119 | 117 | - | - | - | - | - | - | - | - | - | - | - | - | - |
| 2500 | | 345 | 294 | 262 | 241 | 226 | 214 | 210 | 207 | 203 | 199 | 194 | - | - | - | - | - | - | - | - | - | - | - | - | - |
| 4500 | | 621 | 529 | 472 | 434 | 407 | 385 | 377 | 372 | 365 | 357 | 350 | - | - | - | - | - | - | - | - | - | - | - | - | - |
| 150 | A182 F316 | 19 | 22 | 15 | 13 | 12 | 10 | 9 | 8 | 7 | 6 | 4 | 3 | 2 | 1 | 1 | 1 | 1 | 1 | 1 | 1 | 1 | 1 | 1 | 1 |
| 300 | | 50 | 43 | 39 | 36 | 33 | 31 | 30 | 30 | 29 | 29 | 29 | 29 | 29 | 25 | 25 | 21 | 16 | 13 | 10 | 8 | 7 | 5 | 4 | 3 |
| 600 | | 99 | 85 | 77 | 71 | 66 | 62 | 61 | 60 | 59 | 58 | 58 | 57 | 53 | 50 | 50 | 42 | 33 | 26 | 20 | 16 | 13 | 10 | 8 | 6 |
| 800 | | 132 | 114 | 103 | 94 | 88 | 83 | 81 | 80 | 79 | 78 | 77 | 76 | 71 | 67 | 66 | 56 | 43 | 34 | 27 | 21 | 18 | 14 | 11 | 8 |
| 1500 | | 248 | 213 | 193 | 177 | 165 | 155 | 152 | 150 | 147 | 145 | 144 | 143 | 133 | 125 | 124 | 105 | 82 | 64 | 51 | 40 | 33 | 26 | 20 | 14 |
| 2500 | | 414 | 377 | 321 | 295 | 274 | 259 | 254 | 250 | 245 | 243 | 240 | 239 | 222 | 209 | 207 | 175 | 136 | 107 | 85 | 67 | 55 | 43 | 33 | 24 |
| 4500 | | 745 | 641 | 578 | 531 | 494 | 467 | 457 | 449 | 442 | 437 | 432 | 430 | 400 | 376 | 372 | 315 | 245 | 191 | 152 | 121 | 99 | 78 | 60 | 43 |
| 150 | A182 F304 | 19 | 16 | 14 | 13 | 12 | 10 | 9 | 8 | 7 | 6 | 4 | 3 | 2 | 1 | 1 | 1 | 1 | 1 | 1 | 1 | 1 | 1 | 1 | 1 |
| 300 | | 50 | 41 | 37 | 34 | 32 | 30 | 30 | 29 | 29 | 28 | 27 | 27 | 26 | 24 | 22 | 18 | 14 | 11 | 9 | 8 | 7 | 5 | 4 | 3 |
| 600 | | 99 | 83 | 74 | 69 | 64 | 61 | 60 | 58 | 57 | 56 | 54 | 54 | 53 | 49 | 45 | 36 | 28 | 23 | 18 | 16 | 13 | 10 | 8 | 6 |
| 800 | | 132 | 110 | 99 | 91 | 85 | 81 | 79 | 78 | 76 | 74 | 73 | 71 | 70 | 65 | 60 | 47 | 38 | 30 | 24 | 21 | 17 | 14 | 11 | 8 |
| 1500 | | 248 | 207 | 185 | 171 | 161 | 152 | 149 | 145 | 142 | 140 | 137 | 134 | 132 | 122 | 112 | 89 | 71 | 57 | 46 | 39 | 32 | 26 | 20 | 14 |
| 2500 | | 414 | 345 | 309 | 285 | 268 | 254 | 248 | 243 | 237 | 233 | 228 | 223 | 219 | 203 | 187 | 148 | 118 | 94 | 77 | 65 | 53 | 43 | 33 | 24 |
| 4500 | | 745 | 621 | 556 | 514 | 482 | 457 | 447 | 437 | 427 | 420 | 410 | 402 | 395 | 366 | 337 | 266 | 213 | 170 | 138 | 117 | 96 | 78 | 60 | 43 |

Permissible operating pressures [psi] (in acc. with ASME B16.34 Standard Class)

| Class | Material | [°F] | | | | | | | | | | | | | | | | | | | | | | | |
|-------------------|------------------------|-------------|-------|-------|-------|------|------|------|------|------|------|------|------|------|------|------|------|------|------|------|------|------|------|------|------|
| | | -20 to +100 | 200 | 300 | 400 | 500 | 600 | 650 | 700 | 750 | 800 | 850 | 900 | 950 | 1000 | 1050 | 1100 | 1150 | 1200 | 1250 | 1300 | 1350 | 1400 | 1450 | 1500 |
| 150 | A105 ¹⁾ | 285 | 260 | 230 | 200 | 170 | 140 | 125 | 110 | 95 | 80 | 65 | 50 | 35 | 20 | - | - | - | - | - | - | - | - | - | - |
| 300 | A350 LF2 | 740 | 680 | 655 | 635 | 605 | 570 | 550 | 530 | 505 | 410 | 320 | 230 | 135 | 85 | - | - | - | - | - | - | - | - | - | - |
| 600 | | 1480 | 1360 | 1310 | 1265 | 1205 | 1135 | 1100 | 1060 | 1015 | 825 | 640 | 460 | 275 | 170 | - | - | - | - | - | - | - | - | - | - |
| 800 ²⁾ | | 1975 | 1810 | 1745 | 1690 | 1610 | 1515 | 1465 | 1415 | 1350 | 1100 | 850 | 615 | 365 | 225 | - | - | - | - | - | - | - | - | - | - |
| 1500 | | 3705 | 3395 | 3270 | 3170 | 3015 | 2840 | 2745 | 2665 | 2535 | 2055 | 1595 | 1150 | 685 | 430 | - | - | - | - | - | - | - | - | - | - |
| 2500 | | 6170 | 5655 | 5450 | 5280 | 5025 | 4730 | 4575 | 4425 | 4230 | 3430 | 2655 | 1915 | 1145 | 715 | - | - | - | - | - | - | - | - | - | - |
| 4500 | | 11110 | 10185 | 9815 | 9505 | 9040 | 8515 | 8240 | 7960 | 7610 | 6170 | 4185 | 3455 | 2055 | 1285 | - | - | - | - | - | - | - | - | - | - |
| 150 | A182 F22 ²⁾ | 290 | 260 | 230 | 200 | 170 | 140 | 125 | 110 | 95 | 80 | 65 | 50 | 35 | 20 | 20 | 20 | 15 | - | - | - | - | - | - | - |
| 300 | | 750 | 750 | 730 | 705 | 665 | 605 | 590 | 570 | 530 | 510 | 485 | 450 | 385 | 265 | 175 | 110 | 70 | 40 | - | - | - | - | - | - |
| 600 | | 1500 | 1500 | 1455 | 1410 | 1330 | 1210 | 1175 | 1135 | 1065 | 1015 | 975 | 900 | 755 | 535 | 350 | 220 | 135 | 80 | - | - | - | - | - | - |
| 800 ²⁾ | | 2000 | 2000 | 1940 | 1880 | 1775 | 1615 | 1570 | 1515 | 1420 | 1355 | 1300 | 1200 | 1025 | 710 | 465 | 295 | 180 | 110 | - | - | - | - | - | - |
| 1500 | | 3750 | 3750 | 3640 | 3530 | 3325 | 3025 | 2940 | 2840 | 2660 | 2540 | 2435 | 2245 | 1930 | 1335 | 875 | 550 | 345 | 205 | - | - | - | - | - | - |
| 2500 | | 6250 | 6250 | 6070 | 5880 | 5540 | 5040 | 4905 | 4730 | 4430 | 4230 | 4060 | 3745 | 3220 | 2230 | 1455 | 915 | 570 | 345 | - | - | - | - | - | - |
| 4500 | | 11251 | 11211 | 10925 | 10585 | 9965 | 9070 | 8825 | 8515 | 7970 | 7610 | 7305 | 6740 | 5795 | 4010 | 2625 | 1645 | 1030 | 615 | - | - | - | - | - | - |
| 1500 | A182 F91 | 3750 | 3750 | 3640 | 3530 | 3325 | 3025 | 2940 | 2840 | 2660 | 2540 | 2435 | 2245 | 1930 | 1820 | 1800 | 1510 | 1115 | 720 | - | - | - | - | - | - |
| 2500 | | 6250 | 6250 | 6070 | 5880 | 5540 | 5040 | 4905 | 4730 | 4430 | 4230 | 4060 | 3745 | 3220 | | | | | | | | | | | |

| Class | Material | [°F] | | | | | | | | | | | | | | | | | | | | | | | | |
|-------|--------------------------|-------------|------|------|------|------|------|------|------|------|------|------|------|------|------|------|------|------|------|------|------|------|------|------|------|----|
| | | -20 to +100 | 200 | 300 | 400 | 500 | 600 | 650 | 700 | 750 | 800 | 850 | 900 | 950 | 1000 | 1050 | 1100 | 1150 | 1200 | 1250 | 1300 | 1350 | 1400 | 1450 | 1500 | |
| 4500 | A182 F316L A182 F304L | 9000 | 7670 | 6840 | 6300 | 5905 | 5580 | 5470 | 5400 | 5290 | 5185 | 5075 | - | - | - | - | - | - | - | - | - | - | - | - | - | |
| 150 | A182 F316 | 275 | 325 | 215 | 195 | 170 | 140 | 125 | 110 | 95 | 80 | 65 | 50 | 35 | 20 | 20 | 20 | 20 | 20 | 20 | 20 | 20 | 20 | 20 | 20 | 15 |
| 300 | | 720 | 620 | 560 | 515 | 480 | 450 | 440 | 435 | 425 | 420 | 420 | 415 | 385 | 365 | 360 | 305 | 235 | 185 | 145 | 115 | 95 | 75 | 60 | 40 | |
| 600 | | 1440 | 1240 | 1120 | 1025 | 955 | 900 | 885 | 870 | 855 | 845 | 835 | 830 | 775 | 725 | 720 | 610 | 475 | 370 | 295 | 235 | 190 | 150 | 115 | 85 | |
| 800 | | 1920 | 1655 | 1495 | 1370 | 1275 | 1205 | 1180 | 1160 | 1140 | 1125 | 1115 | 1105 | 1030 | 970 | 960 | 815 | 630 | 495 | 390 | 310 | 255 | 200 | 155 | 110 | |
| 1500 | | 3600 | 3095 | 2795 | 2570 | 2390 | 2255 | 2210 | 2170 | 2135 | 2110 | 2090 | 2075 | 1930 | 1820 | 1800 | 1525 | 1185 | 925 | 735 | 585 | 480 | 380 | 290 | 205 | |
| 2500 | | 6000 | 5460 | 4660 | 4280 | 3980 | 3760 | 3680 | 3620 | 3560 | 3520 | 3480 | 3460 | 3220 | 3030 | 3000 | 2545 | 1970 | 1545 | 1230 | 970 | 800 | 630 | 485 | 345 | |
| 4500 | | 10800 | 9290 | 8390 | 7705 | 7165 | 6770 | 6625 | 6515 | 6410 | 6335 | 6265 | 6230 | 5795 | 5450 | 5400 | 4575 | 3550 | 2775 | 2210 | 1750 | 1440 | 1130 | 875 | 620 | |
| 150 | A182 F304 | 275 | 230 | 205 | 190 | 170 | 140 | 125 | 110 | 95 | 80 | 65 | 50 | 35 | 20 | 20 | 20 | 20 | 20 | 20 | 20 | 20 | 20 | 20 | 15 | |
| 300 | | 720 | 600 | 540 | 495 | 465 | 440 | 430 | 420 | 415 | 405 | 395 | 390 | 380 | 355 | 325 | 255 | 205 | 165 | 135 | 115 | 95 | 75 | 60 | 40 | |
| 600 | | 1440 | 1200 | 1075 | 995 | 930 | 885 | 865 | 845 | 825 | 810 | 790 | 780 | 765 | 710 | 650 | 515 | 410 | 330 | 265 | 225 | 185 | 150 | 115 | 85 | |
| 800 | | 1920 | 1600 | 1435 | 1325 | 1240 | 1180 | 1150 | 1125 | 1100 | 1080 | 1055 | 1035 | 1020 | 945 | 865 | 685 | 545 | 440 | 355 | 300 | 250 | 200 | 155 | 110 | |
| 1500 | | 3600 | 3000 | 2690 | 2485 | 2330 | 2210 | 2160 | 2110 | 2065 | 2030 | 1980 | 1945 | 1910 | 1770 | 1630 | 1285 | 1030 | 825 | 670 | 565 | 465 | 380 | 290 | 205 | |
| 2500 | | 6000 | 5000 | 4480 | 4140 | 3880 | 3680 | 3600 | 3520 | 3440 | 3380 | 3300 | 3240 | 3180 | 2950 | 2715 | 2145 | 1715 | 1370 | 1115 | 945 | 770 | 630 | 485 | 345 | |
| 4500 | | 10800 | 9000 | 8065 | 7450 | 6985 | 6625 | 6480 | 6335 | 6190 | 6085 | 5940 | 5830 | 5725 | 5315 | 4885 | 3855 | 3085 | 2470 | 2005 | 1695 | 1390 | 1130 | 875 | 620 | |

Test pressure for A105/A182 F22/A182 F91

| Test | Test medium | Class 800 ⁴⁾ | Class 1500 ⁴⁾ | Class 2500 ⁵⁾ | Class 4500 |
|-----------------------|-------------|-------------------------|--------------------------|--------------------------|------------|
| | | [bar] | [bar] | [bar] | [bar] |
| Shell | Water | 207 | 388 | 647 | 1165 |
| Leak test (back seat) | | 152 | 285 | 474 | 855 |
| Leak test (seat) | | 152 | 285 | 474 | 855 |

Test pressure for A182 F304L/A182 F316L

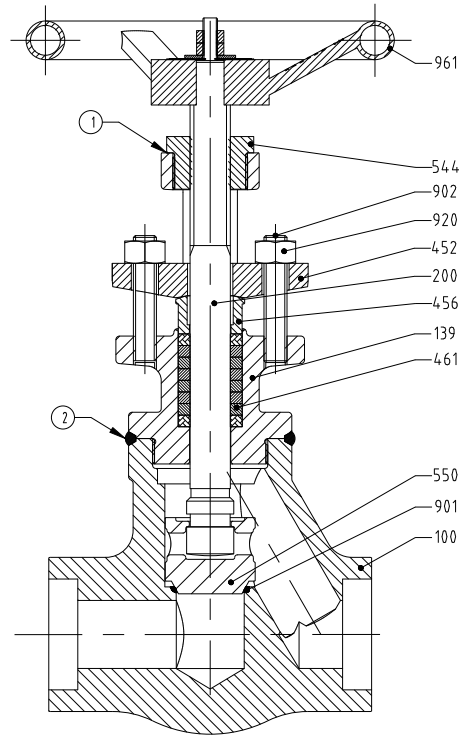
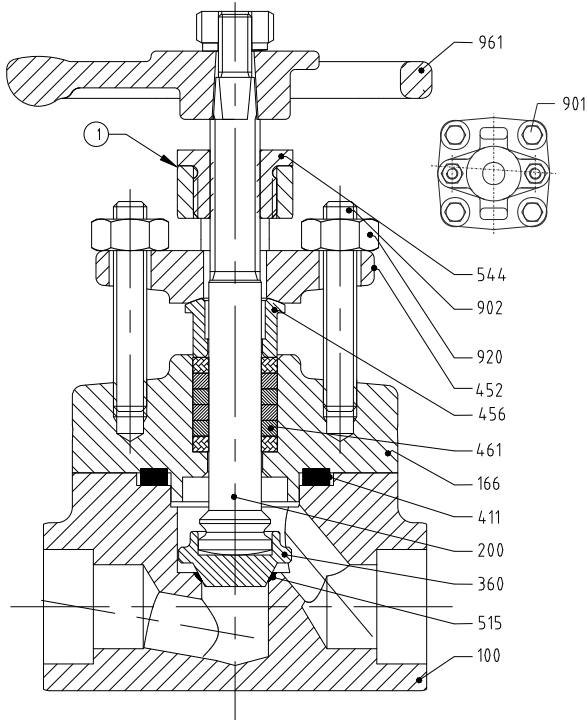
| Test | Test medium | Class 800 ⁴⁾ | Class 1500 ⁴⁾ | Class 2500 ⁴⁾ |
|-----------------------|-------------|-------------------------|--------------------------|--------------------------|
| | | [bar] | [bar] | [bar] |
| Shell | Water | 166 | 347 | 578 |
| Leak test (back seat) | | 122 | 256 | 424 |
| Leak test (seat) | | 122 | 256 | 424 |

Test pressure for A182 F304/A182 F316

| Test | Test medium | Class 800 ⁴⁾ | Class 1500 ⁴⁾ | Class 2500 ⁴⁾ |
|-----------------------|-------------|-------------------------|--------------------------|--------------------------|
| | | [bar] | [bar] | [bar] |
| Shell | Water | 199 | 388 | 647 |
| Leak test (back seat) | | 146 | 285 | 475 |
| Leak test (seat) | | 146 | 285 | 475 |

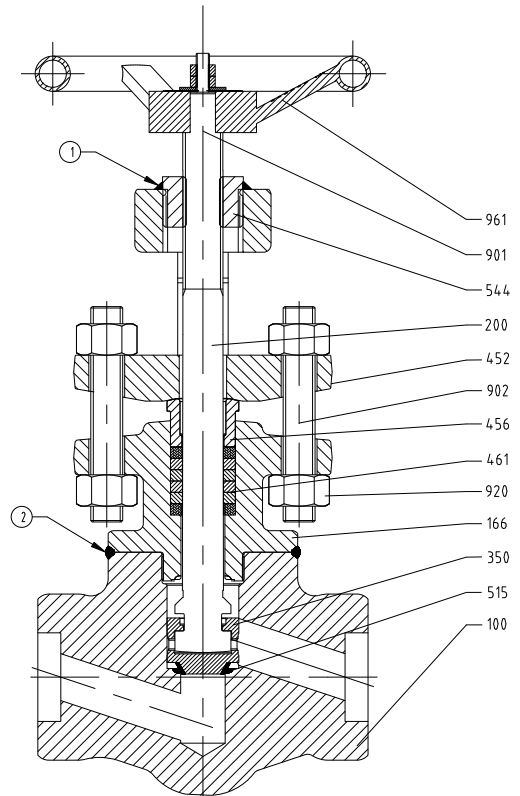
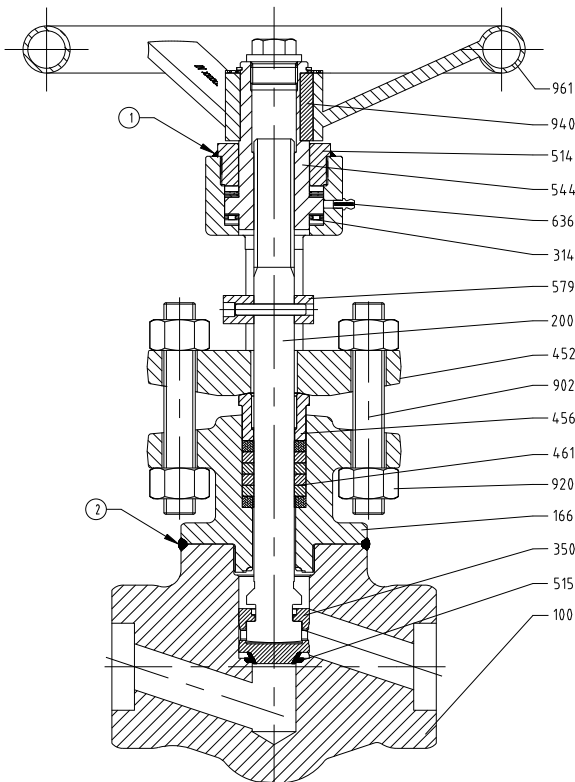
4) To API 598
5) To ASME B16.34

Materials



SICCA 800 GLF

SICCA 1500/2500 GLF



SICCA 4500 GLF
with thrust bearing

SICCA 4500 GLF
without thrust bearing

- ① Tack-welded
- ② Seal-welded

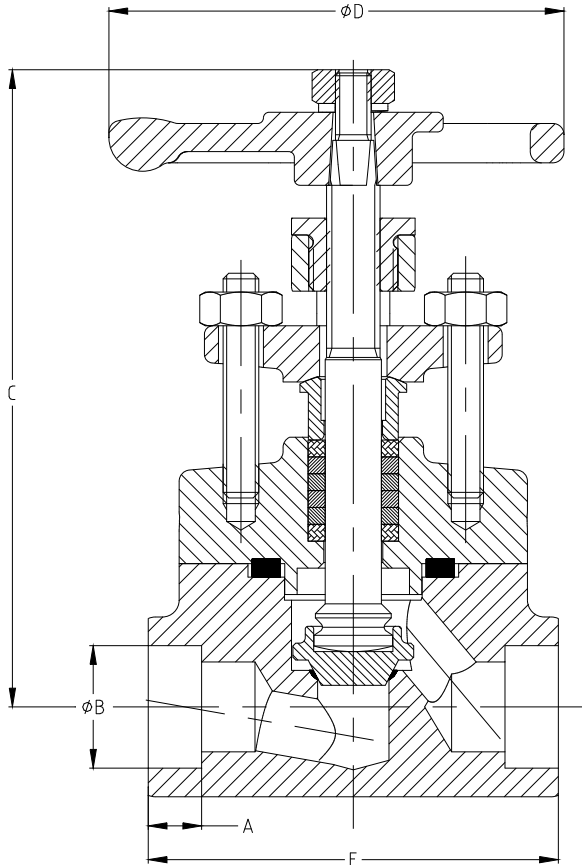
Parts list

| Part No. | Description | Class | Material | Note | | | |
|----------------|---------------------|--------------------|--------------------------|---------------|--------------------|-------------------------|-------------------------------|
| 100 | Body | 800 | A105 | | | | |
| | | | A182 F316L | | | | |
| | | | A182 F304 | | | | |
| | | | A182 F316 | | | | |
| | | | A350 LF2 | | | | |
| | | 1500/2500/4500 | A105 | | | | |
| | | | A182 F22 | | | | |
| | | | A182 F91 | | | | |
| | | | A182 F304 | | | | |
| | | | A182 F316 | | | | |
| 166 | Yoke | 800 | A105 | | | | |
| | | | A182 F316L | | | | |
| | | | A182 F304 | | | | |
| | | 1500/2500/4500 | A182 F316 | | | | |
| | | | A105 | | | | |
| | | | A182 F22 | | | | |
| | | | A182 F91 | | | | |
| | | | A182 F304 | | | | |
| | | | A182 F316 | | | | |
| | | | 200 | Stem | 800 | A479-410-2 | |
| A276 F316L | | | | | | | |
| A182 F304 | | | | | | | |
| A182 F316 | | | | | | | |
| 1500/2500/4500 | A479-410-2 | | | | | | |
| | A479 XM19 | | | | | | |
| | A182 F304 | | | | | | |
| | A182 F316 | | | | | | |
| | 314 | Thrust bearing | | | 4500 | Manufacturer's standard | Only for NPS 1 1/2 and 2 inch |
| | | | | | | | |
| A276 316 | | | | | | | |
| A276 316L | | | | | | | |
| A276-410 (H) | | | | | | | |
| A351 CF8 | | | | | | | |
| 1500/2500 | A276-304+ST6 | | | | | | |
| | A276-316+ST6 | | | | | | |
| | A276 304 | | | | | | |
| | A276 316 | | | | | | |
| | 4500 | CF8 + ST6 | | | | | |
| CF8M + ST6 | | | | | | | |
| 411 | Joint ring | 800 | Stainless steel/graphite | | | | |
| 452 | Gland follower | 800 | A105 | | | | |
| | | | A182 F316L | | | | |
| | | | A182 F316 | | | | |
| | | 1500/2500/4500 | A105 | | | | |
| | | | A182 F22 | | | | |
| | | | A182 F316 | | | | |
| 456 | Lower gland section | 800 | A276 304 | | | | |
| | | | A276 316 | | | | |
| | | | A276 316L | | | | |
| | | | A276-410 | | | | |
| | | 1500/2500/4500 | A182 F316 | | | | |
| | | | A276 304 | | | | |
| | | | A276 316 | | | | |
| | | | A276-410 | | | | |
| | | | 461 | Gland packing | 800/1500/2500/4500 | Graphite | |
| | | | 515 | Seat ring | 800/1500/2500/4500 | ST6 | Integral |
| 544 | Threaded bush | 800/1500/2500/4500 | A582-416 | | | | |
| 901 | Hexagon head bolt | 800 | A193-B7 | | | | |

| Part No. | Description | Class | Material | Note |
|----------|-------------------|--------------------|---------------|------|
| 901 | Hexagon head bolt | 800 | A193-B8M | |
| 902 | Stud | 800 | A193-B6 | |
| | | | A193-B8M | |
| 920 | Nut | 800 | A193-B8M Cl.2 | |
| | | | A194-2H | |
| | | | A194-B8 | |
| 961 | Handwheel | 800/1500/2500/4500 | A194-2H | |
| | | | Cast steel | |

Dimensions and weights

Dimensions and weights of SICCA 800 GLF



SICCA 800 GLF

Dimensions and weights

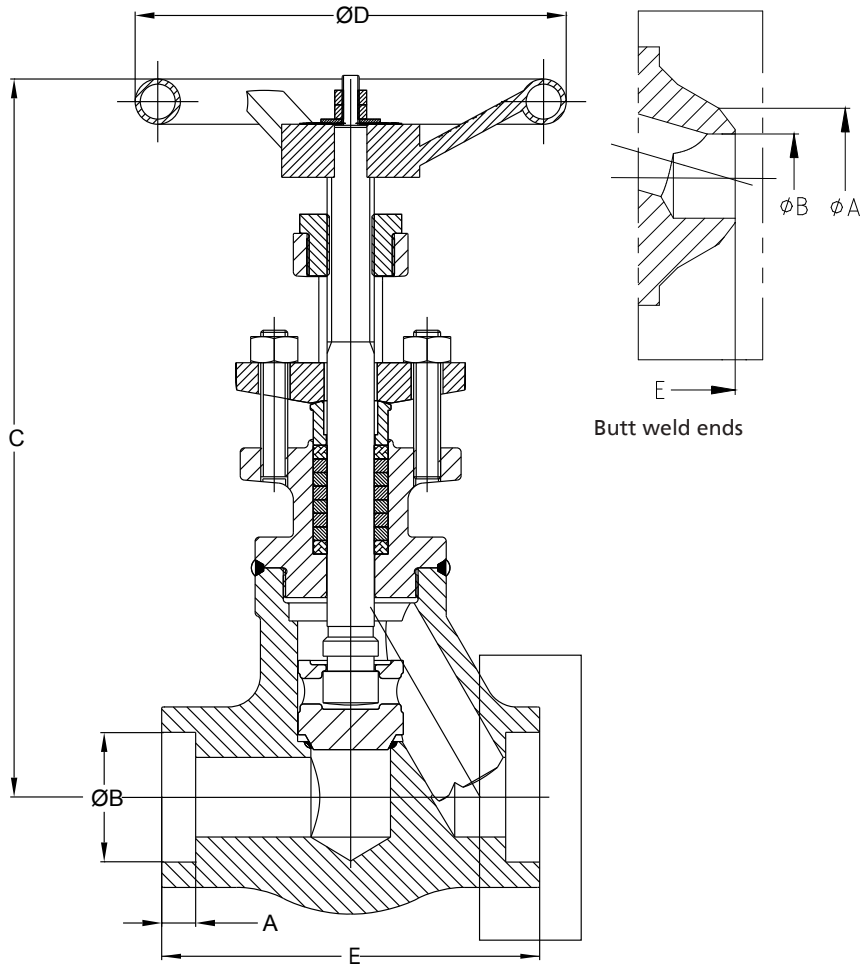
| Class | NPS | A | ØB | C ⁶⁾⁷⁾ | ØD | E | [kg] ⁷⁾ |
|-------|--------|------|------|-------------------|------|------|--------------------|
| | [inch] | [mm] | [mm] | [mm] | [mm] | [mm] | |
| 800 | 1/4 | 9,5 | 14,4 | 125 | 75 | 73 | 1,5 |
| | 3/8 | 9,5 | 17,6 | 125 | 75 | 73 | 1,5 |
| | 1/2 | 9,5 | 21,8 | 125 | 75 | 73 | 1,5 |
| | 3/4 | 12,5 | 27,2 | 142 | 75 | 82 | 2,0 |
| | 1 | 12,5 | 33,9 | 180 | 120 | 108 | 3,0 |
| | 1 1/2 | 12,5 | 48,8 | 220 | 144 | 152 | 6,5 |
| | 2 | 16,0 | 61,2 | 285 | 144 | 148 | 10,5 |

6) Open
7) Approximate values

Mating dimensions as per standard

Face-to-face lengths: Manufacturer's standard
Threaded sockets (F): ASME B1.20.1
Socket weld ends: ASME B16.11

Dimensions and weights of SICCA 1500/2500 GLF



SICCA 1500/2500 GLF

Dimensions and weights

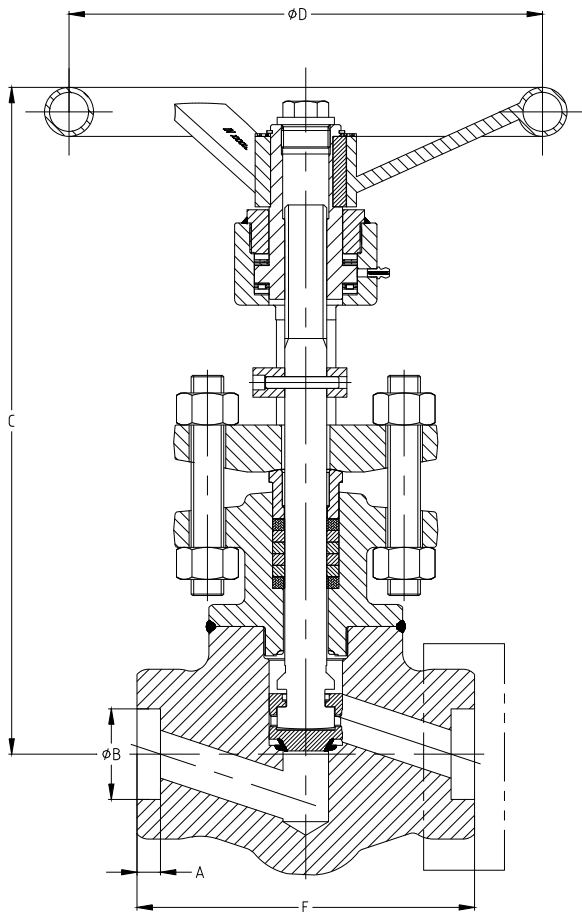
| Class | NPS | A ⁸⁾ | ØA ⁹⁾ | ØB ⁹⁾ | ØB ⁸⁾ | C ¹⁰⁾¹¹⁾ | ØD | E | [kg] ¹¹⁾ |
|-------|--------|-----------------|------------------|------------------|------------------|---------------------|------|------|---------------------|
| | [inch] | [mm] | [mm] | [mm] | [mm] | [mm] | [mm] | [mm] | |
| 1500 | 1/4 | 9,5 | - | - | 14,4 | 197 | 127 | 73 | 3,0 |
| | 3/8 | 9,5 | - | - | 17,6 | 197 | 127 | 73 | 3,0 |
| | 1/2 | 9,5 | 21,3 | 11,8 | 21,8 | 197 | 127 | 73 | 3,0 |
| | 3/4 | 13 | 26,7 | 15,6 | 27,1 | 241 | 176 | 94 | 4,5 |
| | 1 | 13 | 33,4 | 15,2 | 33,8 | 244 | 176 | 122 | 5,5 |
| | 1 1/2 | 13 | 48,3 | 34,0 | 48,7 | 326 | 203 | 160 | 11,5 |
| 2500 | 2 | 16,0 | 60,3 | 42,8 | 61,1 | 360 | 203 | 178 | 15,0 |
| | 1/4 | 10 | - | - | 14,4 | 197 | 127 | 85 | 3,5 |
| | 3/8 | 10 | - | - | 17,6 | 197 | 127 | 85 | 3,5 |
| | 1/2 | 10 | 21,3 | 6,4 | 21,7 | 197 | 127 | 85 | 3,5 |
| | 3/4 | 13 | 26,7 | 11,0 | 27,1 | 243 | 152 | 98 | 5,0 |
| | 1 | 13 | 33,4 | 15,3 | 33,8 | 290 | 152 | 104 | 7,0 |
| | 1 1/2 | 13 | 48,3 | 28 | 48,7 | 351 | 203 | 146 | 12,5 |
| 2 | 16 | 60,3 | 38,2 | 61,1 | 378 | 254 | 172 | 16,0 | |

Mating dimensions as per standard

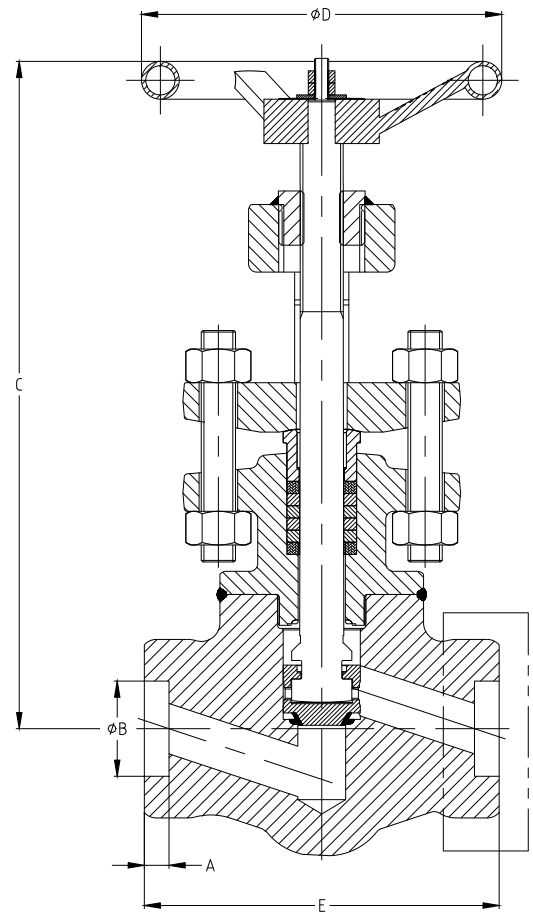
Face-to-face lengths: Manufacturer's standard
 Butt weld ends: ASME B16.25
 Socket weld ends: ASME B16.11

- 8) Valve with socket weld ends
- 9) Valve with butt weld ends
- 10) Open
- 11) Approximate values

Dimensions and weights of SICCA 4500 GLF



SICCA 4500 GLF
with thrust bearing



SICCA 4500 GLF
without thrust bearing

Dimensions and weights

| Class | NPS | A ¹²⁾ | ØA ¹³⁾ | ØB ¹³⁾ | ØB ¹²⁾ | C ¹⁴⁾¹⁵⁾ | ØD | E | [kg] ¹⁵⁾ |
|-------|----------------------|------------------|-------------------|-------------------|-------------------|---------------------|------|------|---------------------|
| | [inch] | [mm] | [mm] | [mm] | [mm] | [mm] | [mm] | [mm] | |
| 4500 | 1/2 | 10 | 21,3 | 10-16 | 21,7 | 309 | 254 | 140 | 11,5 |
| | 3/4 | 13 | 26,7 | 10-16 | 27,1 | 309 | 254 | 140 | 11,5 |
| | 1 | 13 | 33,4 | 12-20 | 33,8 | 348 | 305 | 170 | 16,7 |
| | 1 1/2 ¹⁶⁾ | 13 | 48,3 | 18-30 | 48,7 | 444 | 254 | 200 | 29,0 |
| | 2 ¹⁶⁾ | 16 | 60,3 | 24-38 | 61,7 | 455 | 356 | 230 | 40,3 |

Mating dimensions as per standard

Face-to-face lengths: Manufacturer's standard
Butt weld ends: ASME B16.25
Socket weld ends: ASME B16.11

Installation information

Shut-off globe valves must be installed in the line so as to ensure that the fluid enters the valve beneath the valve disc and flows out above the valve disc. They can also be installed in lines with alternating flow.

The valve bodies are marked with an arrow indicating the flow direction.

- 12) Valve with socket weld ends
- 13) Valve with butt weld ends
- 14) Open
- 15) Approximate values
- 16) Valve with thrust bearing



KSB Pumps Limited
151, NSN Palayam Post
Mettupalayam Road • Coimbatore - 641 031. (India)
Tel. : +91 422 2468222
Fax : +91 422 2468232
E-mail : contactusksbindia@ksb.com
www.ksbindia.co.in