

PowerROC T30 E

Surface drill rig for quarrying and construction

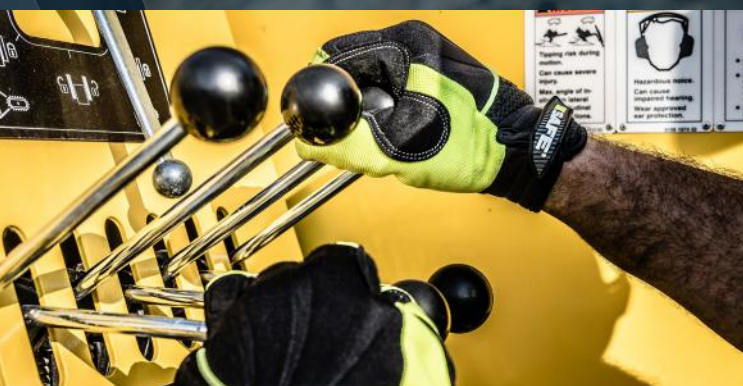
Hole diameter: 45–89 mm (1.75"–3.5")



Stronger than ever

With a robust engine and a reach of 4.3 meters the PowerROC T30 E takes your performance to the next level.

This straightforward and easy-to-operate hydraulic drill rig is a reliable workhorse that will always get the job done, even in the toughest conditions. Thanks to well-proven technology with continuous upgrades and improvements the PowerROC T30 E excels in productivity and reliability.



⊕ Main benefits

High productivity with Epiroc COP rock drills and compressors from Atlas Copco

Efficient operations with direct controls, good reach and a well balanced design

Great mobility thanks to compact size and ease of transportation

When the going gets tough

The PowerROC T30 E is based on well-proven Epiroc technology for high productivity and low maintenance. Even in the toughest conditions, the PowerROC T30 E is safe and easy to operate.



+ Well proven technology

It has been around for three decades and has continuously been upgraded and improved in pace with our customers' increasingly higher demands for performance. Thanks to the straightforward design of the PowerROC T30 E, the robust Epiroc components and impressive power, the easy-to-operate rig repeatedly helps you to overcome the toughest everyday challenges.



+ High performance, low cost

The PowerROC T30 E is a hydraulic drill rig designed especially for construction jobs where long reach is vital. If necessary, it can easily take on other jobs, such as bench drilling in small quarries. Low fuel consumption and high capacity makes the PowerROC T30 E ideal for a variety of construction applications, including house foundations, road construction, pipeline building and trenching.



+ Powerful and robust

PowerROC T30 E has an aluminium feed which translates into low cost of drill consumables. It is equipped with one of two rock drills, RD 14S or COP SC16. Combined with the impressive flushing air capacity it enables high productivity. And behind it all there is a very powerful engine.



A comprehensive service offering

Even the best equipment needs to be serviced regularly to make sure it sustains peak performance. An Epiroc service solution offers peace of mind, maximizing availability and performance throughout the lifetime of your equipment. We focus on safety, productivity and reliability.

By combining genuine parts and an Epiroc service from our certified technicians, we safeguard your productivity – wherever you are.

Technical specifications

Main Components

- Crawler type two speed undercarriage with track oscillation system
- Cummins turbo charged diesel engine QSB4.5 (Tier 3 or Tier 4)
- Atlas Copco screw type compressor
- Folding boom system
- Hydraulic rock drills RD 14S or COP SC16
- Swing arm mounted operator panel
- Dust collection system
- Hydraulic drill rod support with moveable dust hood

Hole range (recommended)

Rock drill	Threads	Drill diameter		Maximum hole length		Starter rod/extension rod	
		Metric	US	Metric	US	Metric	US
RD 14S	T38, T45	51–89 mm	2"–3.5"	175 m	57'	4.3 m/3.7 m	14'/12'
COP SC16	TC35E, T35E, T38E, T45E	45–89 mm	1.75"–3.5"	175 m	57'	4.3 m/3.7 m	14'/12'

Engine

Cummins turbo charged, diesel engine, QSB4.5, Tier 3/stage 3A	
Power rating at 2000 rpm	116 kW/155 hp
Electronic variable engine speed	1 200–2 000 rpm
Cummins turbo charged, diesel engine, QSB4.5, Tier 4i/stage 3B	
Power rating at 2000 rpm	116 kW/155 hp
Electronic variable engine speed	800–2 000 rpm

Compressor

Atlas Copco OIS, screw compressor	Metric	US
Working pressure, max	8.5 bar	123 psi
FAD, at normal working pressure	95 l/s	201 cfm

Hydraulic rock drill

Rock drill	Impact power		Hydraulic pressure, max		Impact rate	RPM, max			Torque, max		Weight approx	
	kW	hp	bar	psi		174	220	1 217 Nm	898 lbf/ft	227 kg	500 lb	
RD 14S	14 kW	18.7 hp	145 bar	2 103 psi	45 Hz	174	220	1 217 Nm	898 lbf/ft	227 kg	500 lb	
COP SC16	16 kW	21.4 hp	200 bar	2 901 psi	55/73 Hz	135	215	1 550 Nm	1 143 lbf/ft	184 kg	406 lb	
			210 bar	3 046 psi		215	1 070 Nm	789 lbf/ft				

Electrical system

Voltage	24 V
Batteries	2 x 12 V, 185 Ah
Alternator	24 V, 70 Ah
Work lights, front	2 x 70 W halogen
Work lights, rear	2 x 70 W halogen
Work lights, feed	2 x 70 W
Display with diagnostics and settings	

Hydraulic system

Anti-jamming	
Rotation pressure control feed RPC-F	
Damper pressure control - impact DPC-I	
Hydraulic oil cooler max ambient temp.	50°C/122°F
Return & drainage filters (filtration rate)	16 µm absolute

Dust collector DCT 140

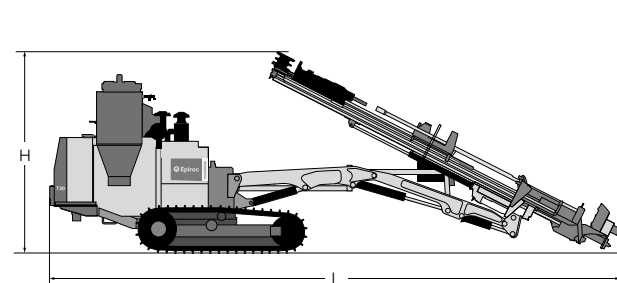
	Metric	US
Filter area	14 m²	151 sq.ft
Suction capacity at 500 mm wg	560 l/s	1 200 cfm
Suction hose diam	102/127 mm	4"/5"
Cleaning air pressure, max	7.5 bar	109 psi
Cleaning air consumption	2–4 l/pulse	0.06 - 0.12 cu.ft/pulse
Number of filter elements	14 pcs	

Feed

	Metric	US
Hydraulic aluminium cylinder feed with hose guide and double drill rod support with moveable lower guide/dust hood		
Total length	7 140 mm	2811'
Travel length	4 240 mm	1669'
Feed extension	1 200 mm	47.2'
Feed rate, max	0.9 m/s	3 ft/min
Feed force, max	16 kN	3 597 lbf
Tractive pull, max	20 kN	4 400 lbf

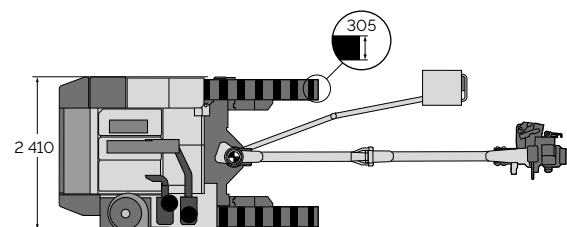
Volumes

	Metric	US
Hydraulic oil tank	200 l	52.8 gal
Hydraulic system, total	250 l	66.0 gal
Compressor oil	20 l	5.3 gal
Diesel engine oil	11 l	2.9 gal
Diesel engine, fuel tank	270 l	71.3 gal
Diesel engine, cooling water (Tier 4i)	31 l	8.2 gal
Diesel engine, cooling water (Tier 3)	25 l	6.6 gal
Traction gear	3 l	0.8 gal
Lubrication tank (ECL)	10 l	1.3 gal
AdBlue	15 l	4.0 gal



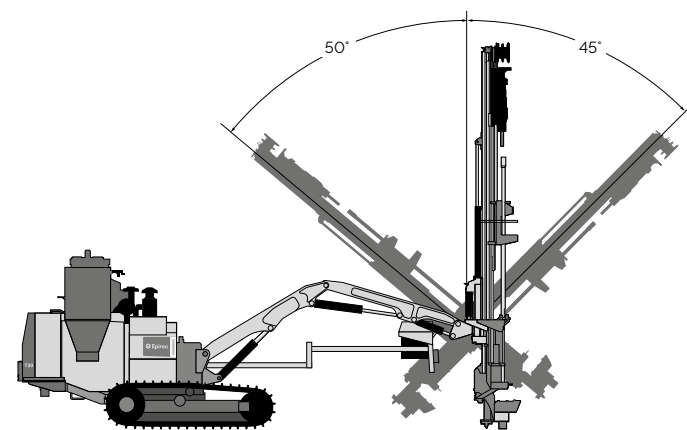
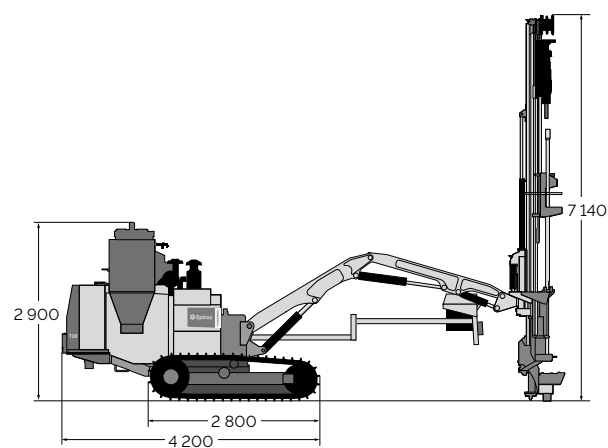
Height and length

Feed dumped	Metric	US
Height (H)	3 600 mm	141.7'
Length (L)	10 000 mm	393.7'

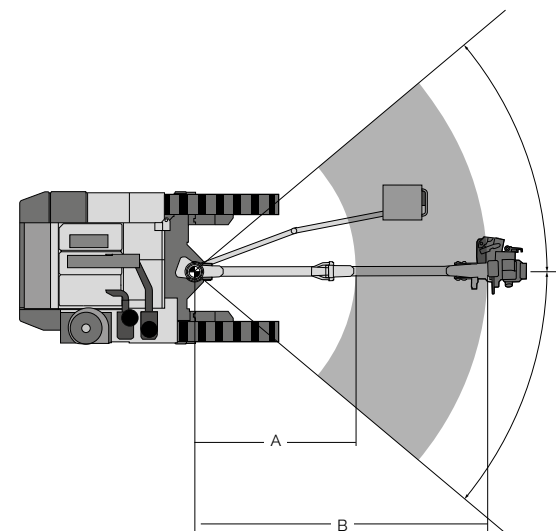


Weight

Standard unit excluding all options and drill rod	13 200 kg	29 101 lb
---	-----------	-----------

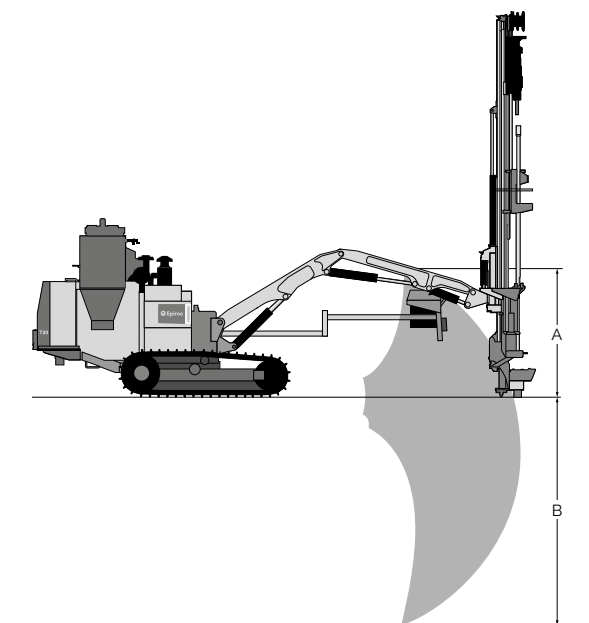


Dumping angles for the feed at maximum boom reach



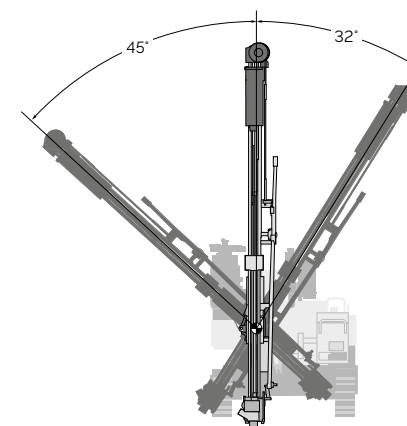
Horizontal reach (mm)

	A	B
PowerROC T30 E	2 300	4 000

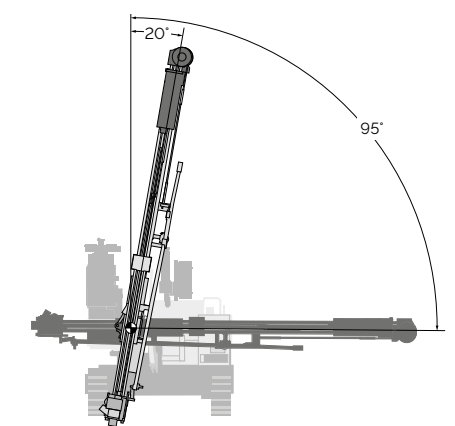


Vertical reach (mm)

	A	B
PowerROC T30 E	1 670	3 960



Normal position range in downwards directed drilling



After re-pinning of feed

Selection of options

Carrier

- Hydraulic support leg
- Hydraulic winch
- Certiq
- Cold start kit

Feed

- Sleeve retainer for RHS 51
 - Jaw set for R32/T38 sleeves
 - Jaw set for T45 sleeves

TDS guide tube guides for drill rod support

- TDS 45 for 45 mm guide tube
- TDS 56 for 56 mm guide tube
- TDS 64 for 64 mm guide tube
- TDS 76 for 76 mm guide tube

Hole measuring systems

- Mechanical hole inclination instrument – ROCANGIE

Lube oil and lube system.

- Thread greasing devise, type ECG (with oil)
- Thread greasing device, brush type (with grease)
- Central lubrication system
- Tropical hydraulic oil, ISO VG 68
- Artic hydraulic oil, ISO VG 32
- Environmentally conformed hydraulic oil, ISO VG 46

Dust control

- Rubber disc for dust collector hood
- Rubber skirt for dust collector hood
- Water mist system excluding tank

Delivered equipment, not mounted

- Gas charging equipment for rock drill
- Conversion kit R32
- Conversion kit T38
- Conversion kit T45

United in performance. Inspired by innovation.

Performance unites us, innovation inspires us, and commitment drives us to keep moving forward. Count on Epiroc to deliver the solutions you need to succeed today and the technology to lead tomorrow.
epiroc.com

