

## KHM/KM, Multiboost and Moviboost Dual System



**Moviboost Dual**  
For Commercial Building  
Services Segment



**Multiboost**  
For Domestic Segment



# KHM/KM - Horizontal Multi-stage Pump

## Design

KHM and KM are horizontal multistage, end suction centrifugal pumps. These are non-self-priming closed couple pumps. These pumps are coupled with line operated induction motor. These are available in single as well as three phase variants.

## Features

- Robust Construction
- Compact Design
- Stainless steel(SS304)hydraulic components
- Low Vibrations and noise
- High reliability
- Service friendly
- Wide usage
- IP 55 motor
- Class F insulation

## Working Conditions

- Medium temperature : +15°C ~ +70°C
- Environmental temperature : ≤ 50°C
- Maximum Suction lift = 3 mtr

## Applications

- Single booster
- Multi-jet pumps
- Movi-Boost Dual
- Washing and cleaning
- Domestic water supply system
- Water treatment
- Temperature control
- Chemical industry
- Pharmaceutical industry

## Operating data Parameters

### For Single phase

- a) Supply Voltage : 220 V +10% -10%
- b) Frequency : 50 Hz ± 10%

### For Three phase

- a) Supply Voltage : 380 V + 10% -10%
- b) Frequency : 50Hz ± 10%

## Pump Description

### Pump Type series

KHM: SS 304 Hydraulic component and CI FG 200 Suction and delivery casing

KM: SS 304 Hydraulic component and SS 304 Suction and delivery casing

\*SS-316 Hydraulic components available on request

### Nominal flow in m<sup>3</sup>/hr

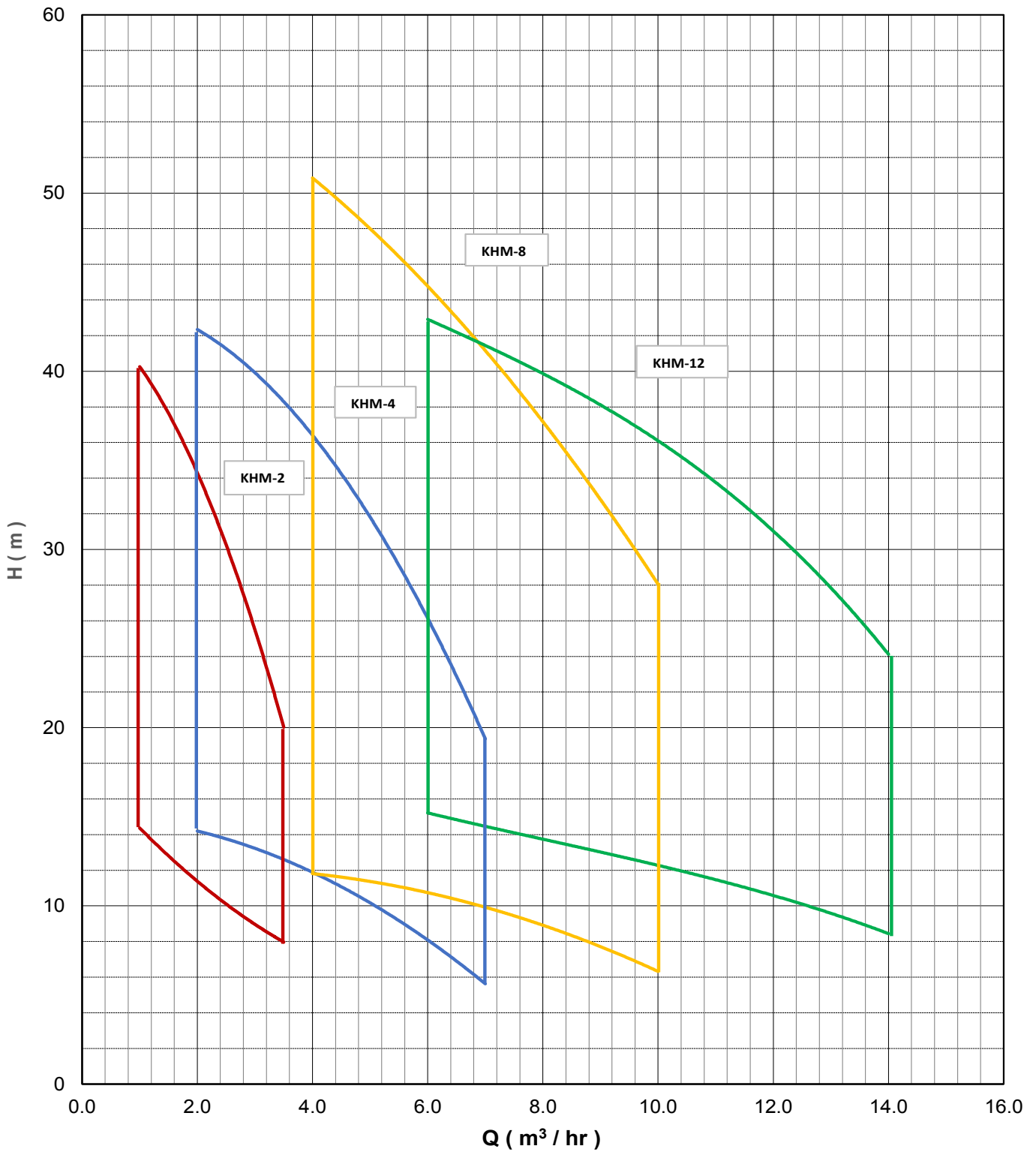
### No. of Stages

### Three Phase

KHM 4 20 T



KHM or KM (KSB Horizontal Multi-Stage pump)



Conversion factor

- 1 m = 3.28 ft
- 1 m³ / hr = 0.2778 lps
- 1 m³ / hr = 16.667 lpm
- 1 m³ / hr = 4.4028 gpm
- 1 m³ / hr = 3.6615 gpm (UK)

## Performance Table

### KHM/KM-2

Suction x Delivery (inches) = 1 x 1

Pump Type	No. Of Stages	Motor rating		Head Vs Discharge for Pump Type KHM - 2							
		kW	HP	Q-Discharge (m <sup>3</sup> / hr)	0.0	1.0	1.50	2.00	2.50	3.00	3.50
KHM2-20	2	0.37	0.50	Head (m)	16	14	13	11	10	9	8
KHM2-30	3	0.37	0.50		23	22	19	17	16	14	11
KHM2-40	4	0.55	0.75		31	28	26	22	21	18	14
KHM2-50	5	0.55	0.75		39	34	32	28	26	22	18
KHM2-60	6	0.75	1.00		45	40	38	34	30	26	20

### KHM/KM-4

Suction x Delivery (inches) = 1.25 x 1

Pump Type	No. Of Stages	Motor rating		Head Vs Discharge for Pump Type KHM - 4							
		kW	HP	Q-Discharge (m <sup>3</sup> / hr)	0.0	2.0	3.0	4.0	5.0	6.0	7.0
KHM4-20	2	0.55	0.75	Head (m)	16	14	13	12	10	8	6
KHM4-30	3	0.75	1.00		24	22	20	18	15	12	8
KHM4-40	4	0.75	1.00		32	29	26	24	21	16	10
KHM4-50	5	0.75	1.00		38	35	33	30	26	21	16
KHM4-60	6	1.10	1.5		46	42	40	36	32	26	19

### KHM/KM-8

Suction x Delivery (inches) = 1.5 x 1.25

Pump Type	No. Of Stages	Motor rating		Head Vs Discharge for Pump Type KHM - 8							
		kW	HP	Q-Discharge (m <sup>3</sup> / hr)	0.0	4.0	5.0	6.0	7.0	8.0	10.0
KHM8-10	1	0.55	0.75	Head (m)	14	12	11	10	10	10	6
KHM8-15	2	0.75	1.00		22	20	18	18	17	16	10
KHM8-20	2	1.10	1.50		27	26	23	22	20	19	14
KHM8-25	3	1.50	2.00		39	34	32	30	27	22	16
KHM8-30	3	1.50	2.00		45	40	37	35	32	29	21
KHM8-35	3	2.20	3.00		50	45	41	38	35	34	22
KHM8-40	4	2.20	3.00		54	52	46	46	40	38	27

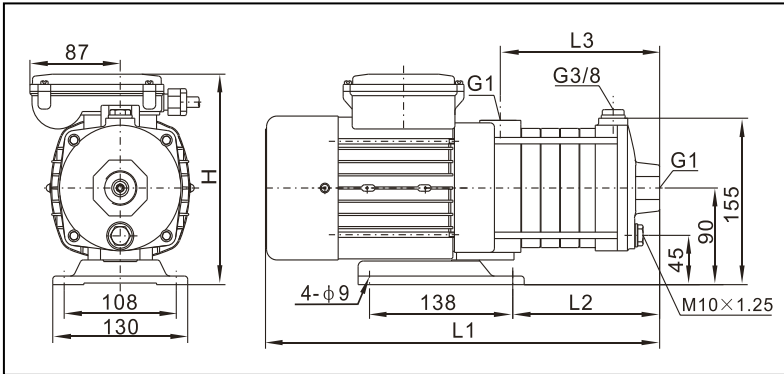
### KHM/KM-12

Suction x Delivery (inches) = 1.5 x 1.5

Pump Type	No. Of Stages	Motor rating		Head Vs Discharge for Pump Type KHM - 12							
		kW	HP	Q-Discharge (m <sup>3</sup> / hr)	0.0	6.0	8.0	10.0	12.0	13.0	14.0
KHM12-10	1	1.10	1.50	Head (m)	16	15	14	12	11	10	8
KHM12-15	2	1.50	2.00		24	22	21	19	16	14	12
KHM12-20	2	1.50	2.00		32	30	28	25	22	19	16
KHM12-25	3	2.20	3.00		40	38	34	31	27	24	22
KHM12-30	3	3.00	4.00		48	43	40	36	31	28	24

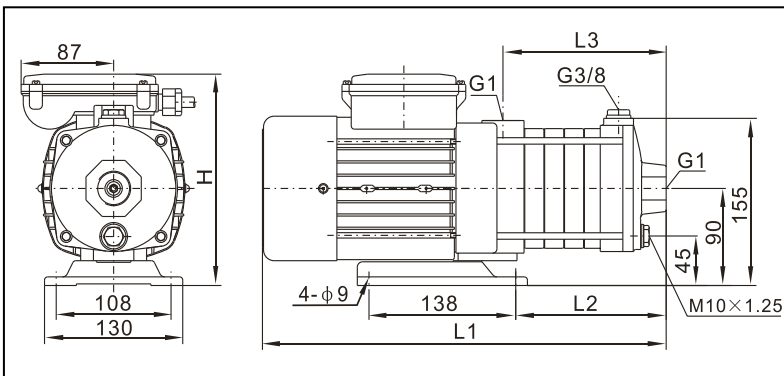
## Dimensional details

### KHM/KM-2



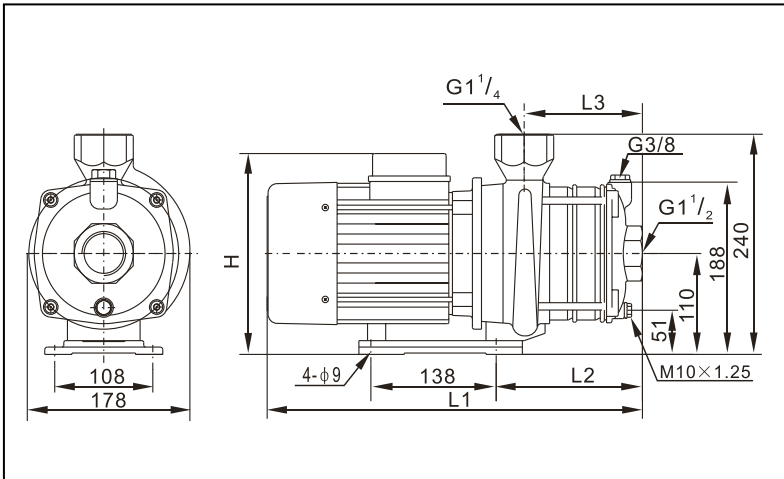
Pump Type	No. Of Stages	Single phase				Three phase				Weight (kg)
		L1	L2	L3	H	L1	L2	L3	H	
KHM2-20	2	326	70	104	198	326	70	104	194	9
KHM2-30	3	344	88	122	198	344	88	122	194	9
KHM2-40	4	362	106	140	198	362	106	140	194	10
KHM2-50	5	380	124	158	198	380	124	158	194	10
KHM2-60	6	398	142	176	198	398	142	176	194	11

### KHM/KM-4



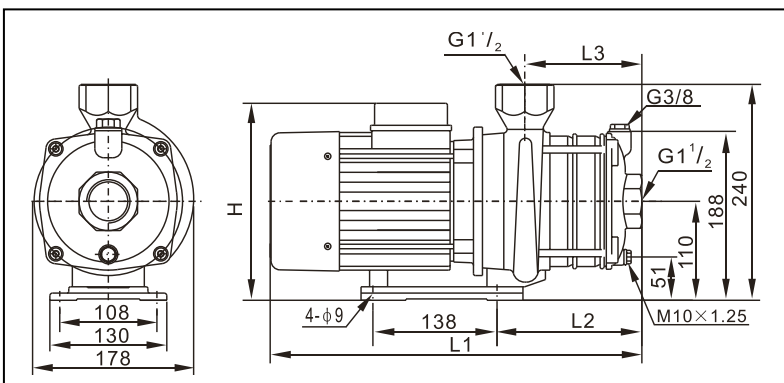
Pump Type	No. Of Stages	Single phase				Three phase				Weight (kg)
		L1	L2	L3	H	L1	L2	L3	H	
KHM4-20	2	335	79	113	198	335	79	113	194	9
KHM4-30	3	362	106	140	198	362	106	140	194	10
KHM4-40	4	389	133	167	198	389	133	167	194	11
KHM4-50	5	416	160	194	198	416	160	194	194	11
KHM4-60	6	443	187	221	198	443	187	221	194	12

### KHM/KM-8



Pump Type	No. Of Stages	Single phase				Three phase				Weight (kg)
		L1	L2	L3	H	L1	L2	L3	H	
KHM0801	1	328	73	78	235	328	73	78	214	13
KHM0815	2	358	103	108	235	358	103	108	214	15
KHM0820	2	358	103	108	235	358	103	108	214	18
KHM0825	3	426	133	138	244	426	133	138	222	20
KHM8-30	3	468	133	138	230	426	133	138	222	25
KHM8-35	3	500	163	168	230	456	163	168	222	30
KHM8-40	4	500	163	168	230	456	163	168	222	31

### KHM/KM-12



Pump Type	No. Of Stages	Single phase				Three phase				Weight (kg)
		L1	L2	L3	H	L1	L2	L3	H	
KHM12-10	1	328	73	78	235	328	73	78	214	15
KHM12-15	2	395	103	108	244	395	103	108	222	18
KHM12-20	2	436	103	108	230	395	103	108	222	20
KHM12-25	3	468	133	138	230	426	133	138	222	24
KHM12-30	3	-	-	-	-	485	133	138	23	27

# Multiboost - Multistage Booster Pump

For Domestic Segment

## Design

Multiboost is multistage monobloc pumps with squirrel cage induction motor. Multiboost comprises of pump with accumulator tank, pressure switch, pressure gauge and non-return valve.

## Applications

- Suitable for water pressure boosting systems
- Multi-jet shower panels
- Domestic water supply systems
- Irrigation and small industrial water supply

## Features

- Robust Construction
- Stainless steel (SS304) hydraulic components
- Low Vibrations and noise
- High reliability

## Operating Data

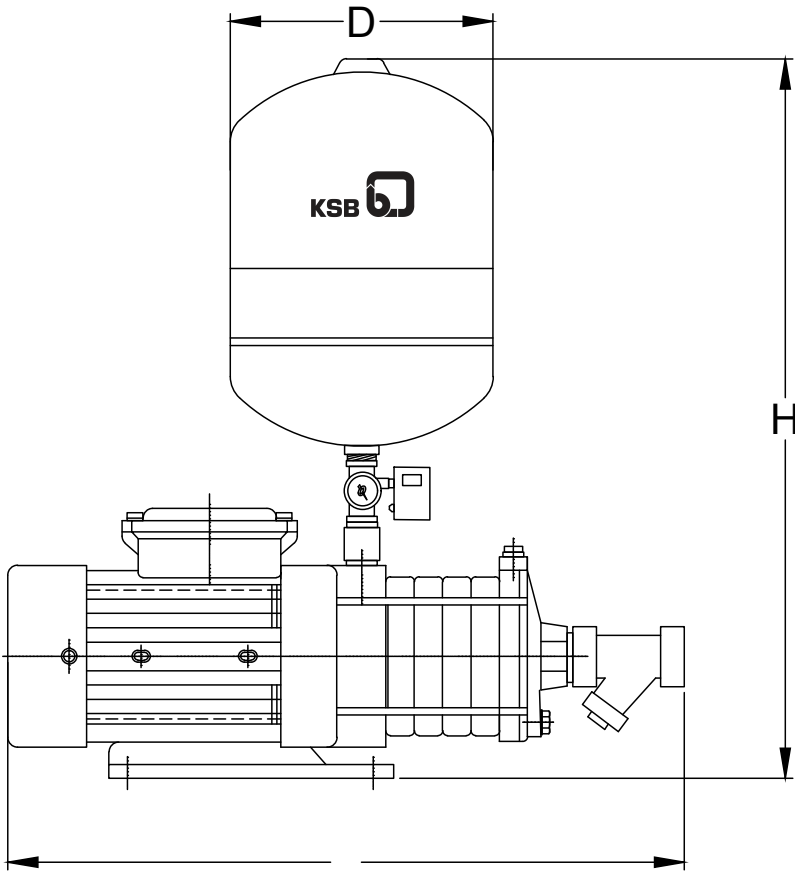
Pump sizes : 7 models  
 Capacity : up to 8 m<sup>3</sup>/hr  
 Head : up to 53 mtr  
 Motor Power : up to 2.2 kW  
 1Ø 220 Volts, 50 Hz



## Operating Data

Model 220V/50Hz	Power (HP)	Q (LPH)	Suction x Delivery (inches)	1000	1500	2000	2500	3000	3500	No of 15 mm Shower heads
KHM0204	0.75	H	1 x 1	28	26	22	21	18	14	3
KHM0206	1.0		1 x 1	40	38	34	30	26	20	4
Model 220V/50Hz	Power (HP)	Q (LPH)	Suction x Delivery (inches)	2000	3000	4000	5000	6000	7000	No of 15 mm Shower heads
KHM0402	0.75	H	1.25 x 1	14	13	12	10	8	6	3
KHM0403	1.0		1.25 x 1	22	20	18	15	12	8	4
KHM0404	1.0		1.25 x 1	29	26	24	21	16	10	6
KHM0406	1.5		1.25 x 1	42	40	36	32	26	19	6
Model 220V/50Hz	Power (HP)	Q (LPH)	Suction x Delivery (inches)	4000	5000	6000	7000	8000	10000	No of 15 mm Shower heads
KHM0803	2.0	H	1.5 x 1.25	40	37	35	32	29	21	8

## Dimensional drawing & details



Model	H	D	L
KHM0204	815	305	490
KHM0206	815	305	523
KHM0402	815	305	460
KHM0403	815	305	487
KHM0404	815	305	514
KHM0406	815	305	568
KHM0803	900	305	593



# Moviboost Dual - Pressure Booster System

For Commercial Building Services Segment

## Design

Moviboost Dual system is a pressure booster pump set with two identical horizontal multistage pumps connected in parallel to support the variable flow requirement. The system comes along with 2 nos. KSB's KHM/KM pumps including all necessary accessories & piping mounted on common base plate, 24L Global Water Tank (optional), 2 pressure switch or Changeover switch and control panel.

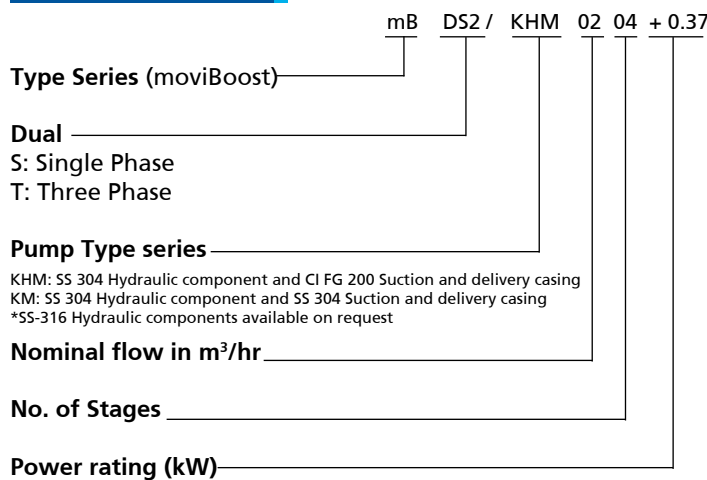
## Features

- Robust Construction
- Compact Design
- Stainless steel (SS304) hydraulic components
- Low Vibrations and noise
- High reliability
- Service friendly
- Wide usage
- IP 55 motor
- Class F insulation

## Working Conditions

- Medium temperature : +15°C ~ +70°C
- Environmental temperature : ≤ 50°C

## Pump Description



## Operating data Parameters

### For Single phase

- a) Supply Voltage : 220 V +10% -10%
- b) Frequency : 50 Hz ± 10%

### For Three phase

- a) Supply Voltage : 380 V +10% -10%
- b) Frequency : 50Hz ± 10%

## Pump protections

- Overload : Overload relay
- Short Circuit protection
- Dry run : Suction tank float switch / Pressure Switch (Provided loose. To be installed by customer)

## Functional Details

- Two KHM horizontal multi stage, centrifugal, non-self-priming Monobloc pumps are used.
- Auto Mode : Pumps cascading through pressure switch, pumps may run in parallel also depending on pressure.
- Manual Mode : Pumps will run at full speed through optional switches provided for setting in manual mode.
- System operates automatically cascade control as function of pressure.
- Two pressure switches are provided for cut-in and cut-out of pumps within prescribed pressure range.
- MS CED coated headers which offers high corrosion resistance.
- Pressure gauge is provided for system pressure indication.
- Overload protection is by thermal overload protection (TOP-in motor for single phase) and over load relay (OLR).
- Dry run protection is provided with help of float switch (optional - Level sensor).
- Factory fitted System.
- Fault indication for over load & dry run.
- IP Protection:  
Control Panel : IP 54  
Motor : IP 55
- Indication for each pump ON / OFF is provided.
- Indication of power ON/OFF is provided

## Scope of Supply

Nos of Pumps	2 Nos.
Cascade control panel	1 Nos
Suction Headers/ Manifold	1 Nos.
Pressure Switch	2 Nos.
Pressure gauge	1 Nos.
Float Switch	1 Nos.
Tank	1 Nos. (optional)
Electronic dry run protection	Optional
Change over switch	Optional

## List of indicators

Power On	: Green Illuminated
Pump On / Off	: Amber Illuminated
Fault Condition	: Amber Illuminated



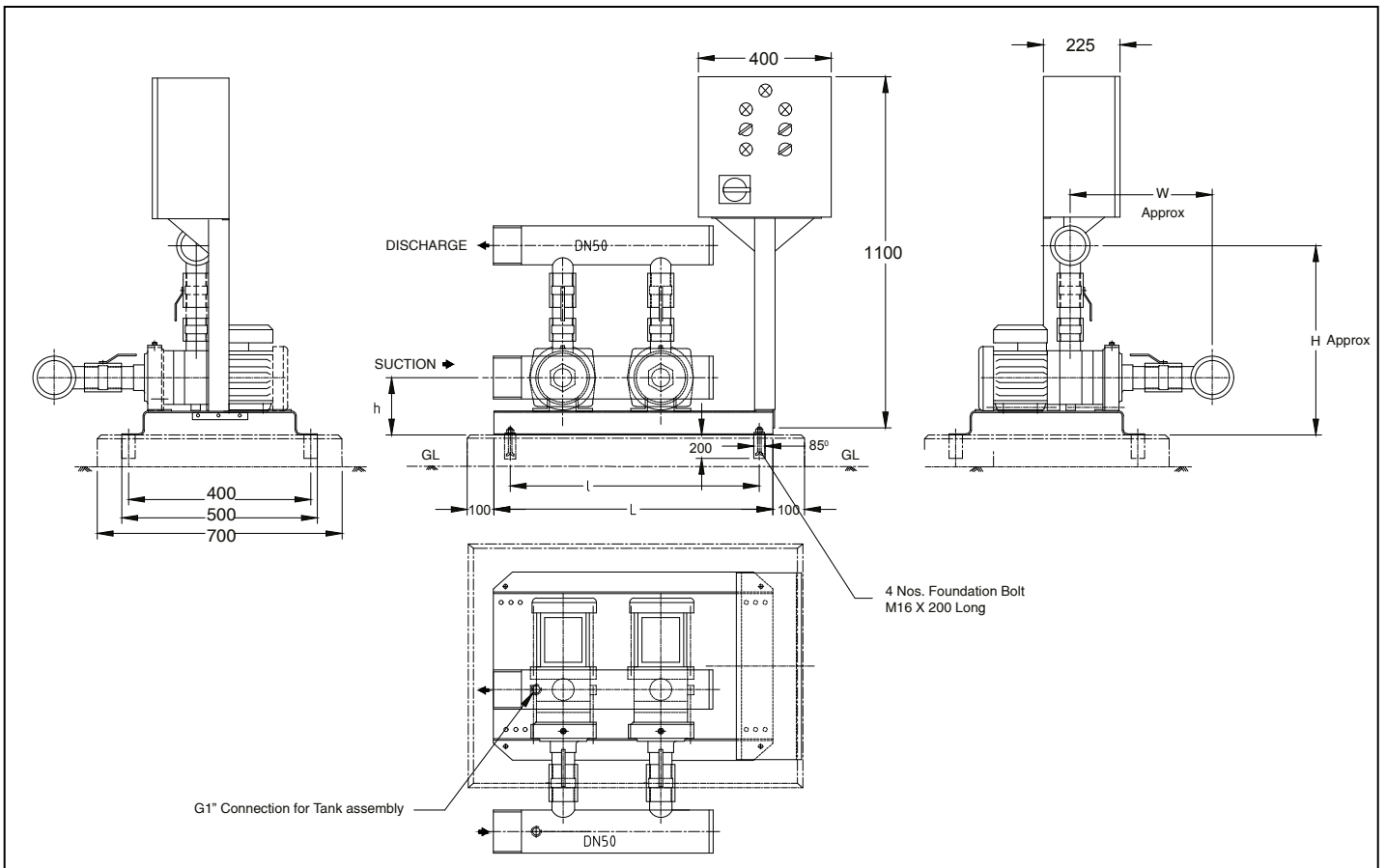


## Applications

- Single booster
- Domestic water supply system
- Multi-jet pumps
- Temperature control
- Chemical industry
- Pharmaceutical industry
- Water treatment
- Washing and cleaning



## Dimensional drawing & details

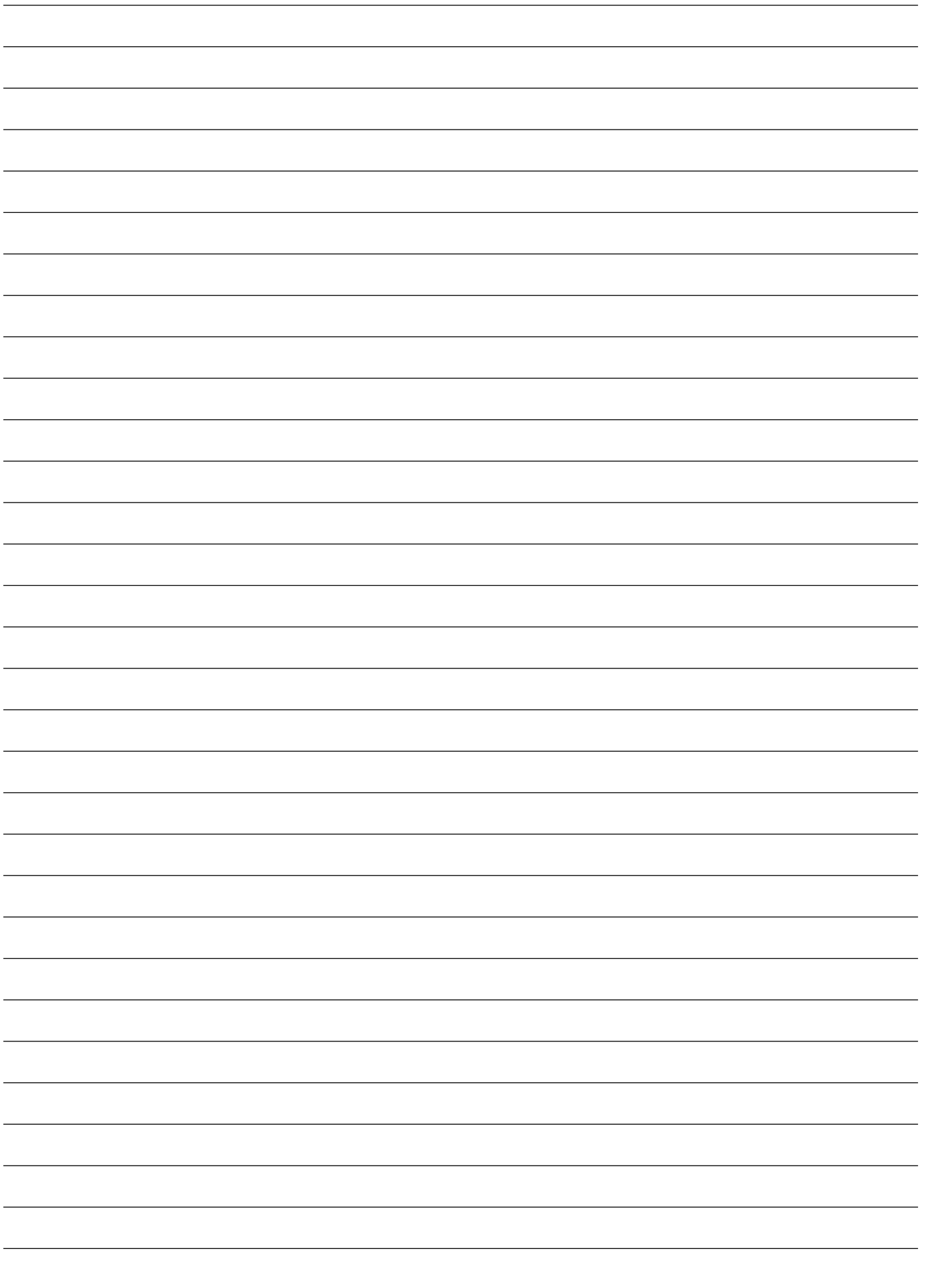


L3 (W)	MODEL	L	I	H	W	h
104	KHM2-20	560	470	593.5	288.5	150
122	KHM2-30	560	470	593.5	288.5	150
140	KHM2-40	560	470	593.5	288.5	150
158	KHM2-50	560	470	593.5	288.5	150
176	KHM2-60	560	470	593.5	288.5	150

L3 (W)	MODEL	L	I	H	W	h
113	KHM4-20	560	470	593.5	299.5	150
140	KHM4-30	560	470	593.5	299.5	150
167	KHM4-40	560	470	593.5	299.5	150
194	KHM4-50	560	470	593.5	299.5	150
221	KHM4-60	560	470	593.5	299.5	150

L3 (W)	MODEL	L	I	H	W	h
78	KHM8-10	790	700	697.5	312	170
108	KHM8-15	790	700	697.5	312	170
108	KHM8-20	790	700	697.5	312	170
138	KHM8-25	790	700	697.5	312	170
138	KHM8-30	790	700	697.5	312	170
168	KHM8-35	790	700	697.5	312	170
168	KHM8-40	790	700	697.5	312	170

L3 (W)	MODEL	L	I	H	W	h
78	KHM12-10	790	700	697.5	312	170
108	KHM12-15	790	700	697.5	312	170
108	KHM12-20	790	700	697.5	312	170
138	KHM12-25	790	700	697.5	312	170
138	KHM12-30	790	700	697.5	312	170



# KSB Pumps and Valves - We are where you are

## Manufacturing Plants :

**Head Office & Pimpri :**  
**Irrigation & Process Division**  
Mumbai-Pune Road, Pimpri,  
Pune - 411 018.  
Tel.: 020-2710 1000 Fax : 020-2742 6000

**Chinchwad :**  
**Power Projects Division**  
D-II Block, MIDC Chinchwad,  
Pune - 411 019.  
Tel.: 020-2740 9100 Fax : 020-2747 0890

**Khandala :**  
**Energy Pumps Division**  
A1, MIDC Khandala Phase II,  
Village Kesurdi, Tal. Khandala,  
Satara - 412 802.  
Tel. : 02169 -246800

**Coimbatore :**  
**Valves Division**  
151, Mettupalayam Road,  
NSN Palayam Post,  
Coimbatore - 641 031.  
Tel.: 0422-2468222, 2468547-9  
Fax : 0422-2468232

**Sinnar :**  
**Standard Pumps Division**  
Plot No. E-3 & E-4, MIDC Sinnar,  
Nashik - 422 113.  
Tel.: 02551-230252 / 53, 229700  
Fax : 02551-230254

**Vambori :**  
**Foundry Division**  
Vambori, Ahmednagar - 413 704.  
Tel.: 02426-272534, 272550, 272463  
Fax : 02426-272043

**Regd. Office :**  
Office No. 601, Runwal R-Square,  
L.B.S. Marg, Mulund (West),  
Mumbai- 400 080,  
Tel.: 022-2168 1300

## Zonal Offices :

**East :**  
30, Circus Avenue, 2nd Floor,  
Kolkata - 700 017.  
Tel.: 033-2287 0473, 2290 0117  
Fax : 033-2287 0588

**West :**  
Office No. 601, Runwal R-Square,  
L.B.S. Marg, Mulund (West),  
Mumbai- 400 080  
Tel.: 022-2168 1300

**North :**  
KSB House, A-96, Sector IV, NOIDA,  
Dist. Gautam Budh Nagar - 201 301.  
Tel.: 0120-2471 600  
Fax : 0120-255 0567

**South :**  
Guindy House, II Floor, # 92 Anna Salai,  
Chennai - 600 032.  
Tel.: 044-2235 2571-2, 2235 5673  
Fax : 044-2235 2749

## Service Stations :

**Chennai :**  
# 6, Self-help Industrial Estate,  
Keelkattalai, Near Keelkattalai -  
Pallavaram Radial Road Signal junction,  
Chennai 600 117  
Tel. 044-22681159

**Howrah :**  
Sadananda Industrial Estate  
Howrah Amta Road, Balitikuri,  
Bakultala  
Howrah - 711 113, West Bengal

**NOIDA :**  
KSB House, A-96, Sector IV, NOIDA,  
Dist. Gautam Budh Nagar - 201 301.  
Tel.: 0120-2471 600  
Fax : 0120-255 0567

**Odhav :**  
Shed No. 22, Gujarat Vepari  
Mahamandal, Odhav,  
Ahmedabad - 382 410.  
Tel.: 079-2290 0372  
Fax : 079-2290 0749

## Branch Offices :

**Ahmedabad :**  
Shed No. 22, Gujarat Vepari  
Mahamandal, Odhav,  
Ahmedabad - 382 410.  
Tel.: 079-2290 0707, 2290 0717

**Aurangabad :**  
Plot No. P-204, Shivshankar Colony,  
Near Hotel Sayli,  
Aurangabad - 431 005.  
Tel.: 0240-235 1440, 234 2447  
Fax : 0240-235 1440

**Bangalore :**  
# 191, 1st Floor, West Of Chord Road,  
II Stage, Bangalore - 560 086.  
Tel.: 080-2349 1806, 2349 3925  
Fax : 080-2349 6036

**Baroda :**  
4-B, Ramkrishna Chamber,  
Productivity Road, Baroda - 390 005.  
Tel.: 0265-233 0532, 233 3226  
Fax : 0265-235 0002

**Bhubaneswar :**  
N5/39, 1st Floor, IRC Village, Nayapalli,  
Bhubaneswar - 751 015.  
Tel.: 0674-255 8497  
Fax : 0674-255 8499

**Chandigarh :**  
SCO - 189, 2nd Floor, Sector - 7C,  
Chandigarh - 160 019.  
Tel. / Fax : 0172-279 0072, 279 0062

**Indore :**  
Office No 104, 1st Floor, Fortune  
Ambience, 4/2 South Tukogunj  
Indore - 452001  
Tel.: 0731- 4216704, 4216705

**Jaipur :**  
Anjali Chambers, 2nd Floor, Block C,  
10, Rajbhawan Road, Civil Lines,  
Jaipur - 302 001.  
Tel.: 0141-222 4554, 222 4904  
Fax : 0141-222 4904

**Jamshedpur :**  
Flat No: 3/1, 3rd Floor, Plot No: 20,  
Road No: 2, Sonari West Layout,  
Jamshedpur - 831011.  
Tel.: 0657-231 4012, 231 4011  
Fax : 0657-231 7128

**Lucknow :**  
309, Chintels House, 16, Station Road,  
Lucknow - 226 001.  
Tel.: 0522-263 5203, 263 5597  
Fax : 0522-263 5597

**Mumbai :**  
Office No. 601, Runwal R-Square,  
L.B.S. Marg, Mulund (West),  
Mumbai- 400 080  
Tel.: 022-2168 1300

**Nagpur :**  
203, Suryakiran Complex, Bajaj Nagar,  
Nagpur - 440 010.  
Tel.: 0712-223 6889, 222 9148  
Fax : 0712-222 9148

**Pune :**  
Mumbai-Pune Road, Pimpri,  
Pune - 411 018.  
Tel.: 020-2710 1000 Fax : 020-2742 6000

**Raipur :**  
E-5, Sector-5, Devender Nagar, Raipur,  
Chhattisgarh - 492009  
Tel.: 0771-258 3658, 258 3921  
Fax : 0771-258 3921

**Secunderabad :**  
D. No. 12-13-197, 198,  
Flat No. 103 & 104, 1st Floor,  
Pavani Anusuya Towers, Tarnaka,  
Secunderabad - 500 017.  
Tel.: 040-2700 1724, 2700 3696  
Fax : 040-2700 1725

**Thrissur :**  
4/227-4, Eravath Lane,  
East Fort.P.O., Thrissur - 680005  
Tel.: 0487 6065657



**KSB Limited**  
**Standard Pumps Division**  
Plot No. E-3 & E-4, MIDC Sinnar, Nashik - 422 113.  
Tel.: +91-2551-230252 / 53, 229700 www.ksbindia.co.in

**Our toll free no : 1800 233 1299**  
(Mon-Sat. 8 am to 10 pm)

Mktg. Services / 10 -19 / 500