



PRIME™ EQUIPMENT

HUSQVARNA WS 8

Art.no: 967 97 13 01

The WS 8 is a streamlined electric wall sawing system featuring next-generation PRIME™ technology. With a cutting depth capacity of up to 395 mm and an impressive power-to-weight ratio, the light and effective WS 8 is particularly tailored to smaller or mid-sized projects. The system is operable with both 3-phase and 1-phase power sources. A user-friendly design and modularity make the WS 8 a top choice for all-round cutting tasks.

FEATURES



X-Halt™ – blade brake operation with PRIME™

Connecting your PRIME™ product to a PP 8 or PP 70 gives you access to the X-Halt™ blade brake function, capable of stopping the rotation of the blade in a fraction of a second.



Explore the modular power of PRIME™

PRIME™ stands for Powerful, Revolutionary, Intelligent, Modular and Electric. Which means great cutting, sawing and drilling power in a compact, sturdy and flexible package. If you need high-performance electric equipment that can handle most jobs, PRIME™ is for you.



Easy to transport and setup

The saw's modular design and even weight distribution make it easy to carry and handle.



Efficient and fast sawing

Blade motor and both feeding motors can be operated individually at the same time with maximum power.

TECHNICAL DATA HUSQVARNA WS 8

Art.no: 967 97 13 01

HUSQVARNA WS 8

MOTOR

Output power	6 kW
Rated input power	6.5 kW
Output shaft RPM, max	1,150 rpm
Max spindle torque	68 Nm
Spindle starting torque	48 Nm

CUTTING EQUIPMENT

Cutting depth, max	395 mm
Blade diameter, max	900 mm
Blade diameter, min	600 mm

TRANSMISSION

Number of gearbox speeds	1
--------------------------	---

PRODUCT DATA

Water connector	TEMA 1300
Water flow, min	3.5 l/min
Water pressure, max	8 bar
Water temp at min flow, max	35 °C

DIMENSIONS

Product size length	286 mm
Product size width	350 mm
Product size height	412 mm
Weight (complete product w/o side packed articles)	92 kg
Weight saw unit	41 lbs
Packaging length	1,200 mm
Packaging width	800 mm
Packaging height	1,470 mm
Article gross weight	1,24,000 g

SOUND AND NOISE

Sound power level, guaranteed (LWA)	105 dB(A)
Sound power level, measured	119 dB(A)
Sound pressure level at operators ear	105 dB(A)



View all product details on:

<https://www.husqvarnaconstruction.com/in/prime-equipment/ws8/>



ELECTRIC POWER PACKS
PP 8

Output power:

6.5 kW

Rated current (1 phase):

15 A

Rated current (3 phase):

15 A

Voltage:

120-240 / 200-480 V



BLADE GUARDS AND COVERS

BLADE GUARD

Accessory for:

Wall saws

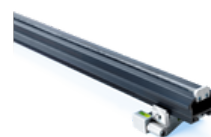


BLADE GUARDS AND COVERS

BLADE GUARDS FOR FLUSH CUTTING

Accessory for:

Wall saws



TRACKS

TRACK 1.1 M

Accessory for:

Wall saws