



WALL SAWS

HUSQVARNA WS 482 HF

Art.no: 967 64 67 01

WS 482 HF is a very powerful wall saw for cutting reinforced concrete, brick and other building materials, up to 730 mm thickness. The water-cooled electric motor has an unbeatable power-to-weight ratio. This wall saw can be used for all kinds of openings and sawing including stair, bevel and flush cutting. It's easy to assemble, run and transport making your job more comfortable and faster. WS 482 HF can be combined with CS 10, transforming it into a perfect wire saw, or WSC 40, transforming it into a perfect chain saw to finish corners.

FEATURES



Increased control

Two driving modes – standard which suits most applications while manual mode can be used in tougher conditions when extra control is needed for a more flexible operation.



Efficient and fast sawing

Blade motor and both feeding motors can be operated individually at the same time with maximum power.



Unbeatable power-to-weight ratio

The powerful motor generates 19 kW to the spindle at 32 A, even though the saw head weighs just 28.0 kg.



Easy to transport and setup

The saw's modular design and even weight distribution make it easy to carry and handle.

TECHNICAL DATA HUSQVARNA WS 482 HF

Art.no: 967 64 67 01

HUSQVARNA WS 482 HF

ENGINE

Output shaft RPM, max	1,200 rpm
Max spindle torque	230 Nm
Spindle starting torque	230 Nm
Rated current	32 A
Power Source	Corded

CUTTING EQUIPMENT

Arbor diameter	60/25.4 mm
Blade diameter, max	1,600 mm
Blade diameter, min	600 mm
Cutting depth, max	730 mm
Starter blade diameter, max	1,000 mm

TRANSMISSION

Number of gearbox speeds	2
--------------------------	---

PRODUCT DATA

Water flow, min	3.5 l/min
Water pressure, max	7 bar
Water temp at min flow, max	25 °C

DIMENSIONS

Product size length	2,200 mm
Product size width	900 mm
Product size height	800 mm
Weight (complete product w/o side packed articles)	28 kg
Weight saw carriage	3.9 kg
Weight saw unit	29.6 kg
Packaging length	2,200 mm
Packaging width	900 mm
Packaging height	650 mm
Article gross weight	1,58,000 g

SOUND AND NOISE

Sound power level, guaranteed (LWA)	109 dB(A)
Sound power level, measured	108 dB(A)
Sound pressure level at operators ear	108 dB(A)



View all product details on:

<https://www.husqvarnaconstruction.com/in/wall-saws/ws482hf/>

RELATED CONSUMABLES



WALL SAW BLADES VARI-CUT™ W1110

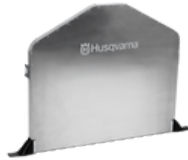
Diameter mm:
800 / 1,000 / 1,200 mm
Segment height mm:
14 mm
Arbor diameter:
60 mm

RELATED EQUIPMENT & ACCESSORIES



BLADE GUARDS AND COVERS BLADE GUARD

Accessory for:
Wall saws



BLADE GUARDS AND COVERS ONE-PIECE BLADE GUARD

Accessory for:
Wall saws



BLADE GUARDS AND COVERS BLADE GUARDS FOR FLUSH CUTTING

Accessory for:
Wall saws



ATTACHMENTS BLADE FLANGE HUB, BORE 130 MM

Accessory for:
Wall saws



ATTACHMENTS BLADE FLANGE HUB, BORE 60 MM

Accessory for:
Wall saws



TRACKS TRACKS

Accessory for:
Wall saws, Drill stands



[husqvarnaconstruction.com](https://www.husqvarnaconstruction.com)