

Husqvarna Soff-Cut 4000

The Husqvarna Soff-Cut 4000 self-propelled petrol saw is designed for heavy-duty commercial, industrial and paving applications. Features include a 20 hp twin-cylinder engine with overhead valves, heavy-duty air cleaner, electric start, full pressure lubrication, hydraulic valve lifters and a mechanical fuel pump. Three blade widths can be used, allowing different joint widths and crack control simultaneously.

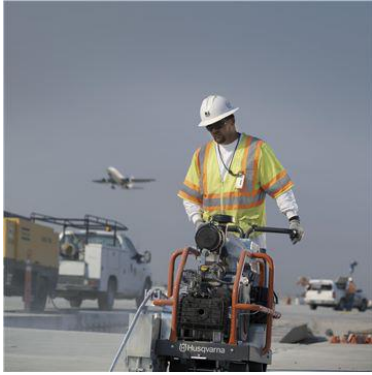
- ✿ Cutting **70 mm**
depth, max
- ✿ Blade **343 mm**
diameter, max
- Output power **15.3 kW**
(As rated by the
engine/motor
manufacturer)

Article number : EARLY ENTRY SAWS Soff-
Cut 4000 20.5 hp | 13-1/2" | CE | Kohler -
966 84 55-02



FEATURES

Want to take a closer look? Learn more about the product in depth by exploring its features and benefits.



Soff-Cut® technology

Husqvarna Soff-Cut® is a unique patented system for early entry concrete sawing. This technology enables concrete to be cut within the first one or two hours of finishing and before final set. Husqvarna Soff-Cut® provides the best solution for minimising the risk of random cracking, and it simplifies the working process, compared to conventional sawing. +

SPECIFICATIONS



Motor/engine manufacturer

Motor/engine model

Output power (As rated by the engine/motor manufacturer)

Fuel tank volume

Exhaust emissions (CO2 EU V)



Weight

Specifications

Blade diameter, max

343 mm

Kohler

Command PRO

CH640

15.3 kW

16.43 l

856 g/kWh

190.51 kg