

# Husqvarna Soff-Cut 2000

A self-propelled dry-cutting petrol saw ideal for medium to heavy-duty commercial, industrial and paving applications. The Husqvarna 2000 is designed for versatility, ease of use and high production capabilities. Three blade widths can be used, allowing for different joint widths and crack control simultaneously. Features include a 9 hp engine with automatic compression release for easy starting, chain driven overhead cam system, superior cooling, excellent lubrication system, and a cyclone air cleaner to increase engine longevity.

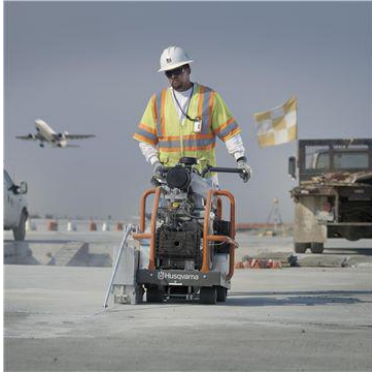
- Motor/engine **EX27**  
model
- Output power **6.5 kW**  
(As rated by the  
engine/motor  
manufacturer)
- Fuel tank **6.02 l**  
volume
- Blade **254 mm**  
diameter, max

Article number : EARLY ENTRY SAWS Soff-  
Cut 2000 9 hp | 10" | CE | Robin - 966 84  
53-02



## FEATURES

Want to take a closer look? Learn more about the product in depth by exploring its features and benefits.



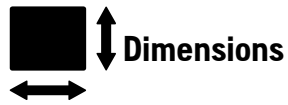
### **Soff-Cut® technology**

Husqvarna Soff-Cut® is a unique patented system for early entry concrete sawing. This technology enables concrete to be cut within the first one or two hours of finishing and before final set. Husqvarna Soff-Cut® provides the best solution for minimising the risk of random cracking, and it simplifies the working process, compared to conventional sawing. +

## SPECIFICATIONS



Motor/engine manufacturer	<b>Robin</b>
Motor/engine model	<b>EX27</b>
Output power (As rated by the engine/motor manufacturer)	<b>6.5 kW</b>
Fuel tank volume	<b>6.02 l</b>



Weight	<b>143.79 kg</b>
--------	------------------

### Specifications

Blade diameter, max **254 mm**