

# WE'RE EXPERTS IN DIAMOND TOOLS – SO YOU DON'T HAVE TO BE

Husqvarna is one of the world's leading developers and manufacturers of diamond tools for cutting and drilling in concrete and other construction materials. We supply millions of diamond tools – saw blades, drill bits, wires and grinding tools – to professional contractors, craftsmen and rental companies all over the world. A Husqvarna diamond tool is always a safe choice. If you're not sure which tool to pick for a specific job, just follow our recommendation charts or consult your Husqvarna sales contact.



For more information,  
visit [www.husqvarnacp.com](http://www.husqvarnacp.com)

## Diamond tools for any requirement.

If you're a concrete cutting specialist working full-time with cutting and drilling, you have other demands on the diamond tools than, for example, a paving or pipe laying contractor. To help you find the best tool for your job, Husqvarna diamond tools come in three performance categories: Gold, Silver and Bronze.

### GOLD

Husqvarna Gold level diamond tools are developed for specialist contractors. Made for intensive professional use in specialist applications. Provide maximum cutting speed and wear resistance in heavy cutting, grinding and drilling.

### SILVER

Husqvarna Silver level diamond tools are developed for general contractors. Made for professional use in all-round applications. Provide high cutting speed and wear resistance in all cutting, grinding and drilling.

### BRONZE

Husqvarna Bronze level diamond tools are developed for occasional users. Made to provide a good balance between performance and price in all common cutting and drilling applications.

## Recommendation chart.

For cutting in harder materials, a tool with softer bond works best because the diamonds are exposed faster, which means faster cutting. When working in softer or more abrasive materials, a tool with harder bond works best because of greater resistance to abrasion.

The tool's suitability for different materials is indicated by the following scale:

- ● ● = Optimal
- ● = Good
- = Acceptable
- = Not recommended

Recommendation charts can be found in the product tables and also in the interactive Tool Guide available on our website.

For handheld applications, the tool packaging clearly shows which material the blade is optimized for.





## Tools and equipment developed together.

If you want to ensure that you get the most out of your Husqvarna equipment, use it with Husqvarna diamond tools. We see the diamond tool, the machine and the user as a whole that must work optimally together. This view is an important foundation of our product development.

### WALL SAW BLADES AND CHAIN – PAGE 24

- W1400 Diagrip™
- W1100
- PRO 45 WSC 40

### WIRE SAW WIRES – PAGE 36

- Vacuum-brazed wires
- Closed loop wires
- Sintered wires
- Electroplated wires

### FLOOR SAW BLADES – PAGE 44

- F1400 Diagrip™
- F1100
- F600
- L600
- F400 Diagrip™
- Elite-Cut S
- Vari-Cut S
- Tacti-Cut S

### SOFF-CUT® BLADES – PAGE 53

- XL14
- XL10
- XL6

### FLOOR GRINDING AND POLISHING TOOLS – PAGE 62

- Elite-Grind G
- Vari-Grind G
- Polishing tools
- Ceramic dry grinding and polishing tools
- Cup wheels for surface preparation
- Floor treatment products

### CORE DRILL BITS – PAGE 80

- Elite-Drill D
- Vari-Drill D
- Tacti-Drill D
- D1210
- D800
- D600

### HANDHELD POWER CUTTER BLADES – PAGE 98

- Elite-Cut S
- Vari-Cut S
- Tacti-Cut S
- Diamond tools for special applications
- Diamond tools for angle grinders

### TABLE SAW BLADES – PAGE 116

- Elite-Cut GS
- Tacti-Cut GS



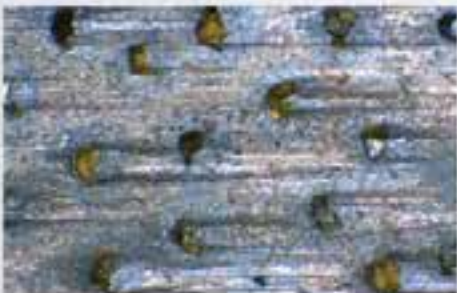


# DIAMOND BLADES AND CHAIN FOR WALL SAWING

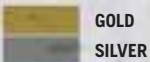
With their advanced design, Husqvarna's wall saw blades ensure top performance in terms of product life and cutting properties. The W 1400 series has Diagrip™, a revolutionary technology for manufacturing segments, which delivers superior cutting capacity, longer life and a smooth, rapid cut. Also available in low-noise version with a three-layer sandwich core which produces 50% less noise than a standard solid core. The W 1100 series consists of blades with a high cutting speed and a good balance between cost and performance. Husqvarna PRO 20 and PRO 45 for WSC 40 are diamond chains optimized for use with WSC 40, enabling efficient cutting and long service life with minimal chain stretch.

## Revolutionary diamond tool technology for superior cutting capacity and durability.

One of the greatest benefits with the Diagrip™ technology is how fast and smooth the diamond tools go through all types of construction materials. Diagrip™ tools means trouble-free sawing, especially in heavily reinforced concrete.



The diamonds are specially treated to remain in place in the segments longer, and be distributed optimally, delivering maximum efficiency to every diamond. With Diagrip™ the diamonds are exposed and expended at an even rate, which makes the edge very even and powerful, even when cutting hard materials like reinforced concrete.



See pages 14–15 for more information.



W 1400 DIAGRIP™



W 1100



NEW

DIAMOND CHAINS

MACHINE POWER	W 1400 DIAGRIP™					W 1100			DIAMOND CHAINS	
	<10 KW	10–15 KW	>19 KW	13–25 KW	>19 KW	<10 KW	10–15 KW	>15 KW	PRO 20 WSC 40	PRO 45 WSC 40
PRODUCT	W 1405	W 1410	W 1415	W 1420	W 1430	W 1105	W 1110	W 1120		
SEGMENT SHAPE										
<b>MATERIAL</b>										
Reinforced concrete, hard	●●●	●●	●●●	●●●	●●	●●●	●●	●	●●●	●●
Reinforced concrete, medium	●●	●●●	●●●	●●	●●●	●●	●●●	●●	●●	●●●
Reinforced concrete, soft	●	●●●	●●	●	●●●	●	●●●	●●●	●	●●●
Brick	●	●●	●	●	●●●	—	●	●●	●	●●
<b>RECOMMENDED EQUIPMENT</b>										
	WS 220	WS 440 HF	WS 482 HF, WS 463	WS 482 HF, WS 463, WS 440 HF	WS 482 HF, WS 463	WS 220	WS 440 HF	WS 482 HF	WSC 40	WSC 40

●●● = Optimal ●● = Good ● = Acceptable — = Not recommended



## Husqvarna W 1405 Diagrip™.

Professional blades for hard concrete, <10 kW saws.

PRODUCT NUMBER - 60 MM CENTRE HOLE	PRODUCT NUMBER - FLUSH CUTTING DRAWING PL3011 FOR WS 440 HF, WS 463, WS 482 HF	DIAMETER, MM	SEGMENT LENGTH, MM	SEGMENT WIDTH, MM	SEGMENT HEIGHT, MM	BORE, MM
<b>STANDARD WALL SAW BLADES</b>						
581 24 53-01	581 24 53-02	600	49	5.0	10.0+3.0	60
581 24 54-01	581 24 54-02	650	49	5.0	10.0+3.0	60
581 24 55-01	581 24 55-02	700	49	5.0	10.0+3.0	60
581 05 91-02	581 05 91-01	750	49	5.0	10.0+3.0	60
580 97 53-02	580 97 53-01	800	49	5.0	10.0+3.0	60
581 24 56-01	581 24 56-02	900	49	5.0	10.0+3.0	60
581 05 92-02	581 05 92-01	1000	49	4.7	10.0+3.0	60
581 24 57-01	581 24 57-02	1200	49	4.7	10.0+3.0	60
581 24 58-01	581 24 58-02	1500	49	4.7	10.0+3.0	60
<b>LOW NOISE WALL SAW BLADES</b>						
581 24 53-07	581 24 53-08	600	49	5.0	10.0+3.0	60
581 24 55-06	581 24 55-09	700	49	5.0	10.0+3.0	60
580 97 53-07	580 97 53-08	800	49	5.0	10.0+3.0	60
581 24 56-03	581 24 56-04	900	49	5.0	10.0+3.0	60
581 05 92-04	581 05 92-05	1000	49	4.7	10.0+3.0	60
581 24 57-05	581 24 57-06	1200	49	5.0	10.0+3.0	60

PRODUCT NUMBER - 60 MM CENTRE HOLE	PRODUCT NUMBER - FLUSH CUTTING DRAWING PL70061 FOR WS 220	DIAMETER, MM	SEGMENT LENGTH, MM	SEGMENT WIDTH, MM	SEGMENT HEIGHT, MM	BORE, MM
<b>WALL SAW BLADES FOR WS 220, LOW-POWERED SAWS</b>						
581 24 53-09	581 24 53-30	600	49	3.8	10.0+3.0	60
581 24 53-18	581 24 53-31	600	49	4.5	10.0+3.0	60
580 97 53-10	580 97 53-20	800	49	3.8	10.0+3.0	60
581 24 56-11	581 24 56-14	900	49	3.8	10.0+3.0	60
<b>LOW NOISE WALL SAW BLADES FOR WS 220, LOW-POWERED SAWS</b>						
581 24 53-25	581 24 53-27	600	49	4.7	10.0+3.0	60
581 24 53-07	581 24 53-26	600	49	5.0	10.0+3.0	60
581 24 56-12	581 24 56-15	900	49	4.7	10.0+3.0	60

## Husqvarna W 1410 Diagrip™.

Professional blades for hard to medium hard concrete, 10–15 kW saws.

PRODUCT NUMBER - 60 MM CENTRE HOLE	PRODUCT NUMBER - FLUSH CUTTING DRAWING PL3011 FOR WS 440 HF, WS 463, WS 482 HF	DIAMETER, MM	SEGMENT LENGTH, MM	SEGMENT WIDTH, MM	SEGMENT HEIGHT, MM	BORE, MM
<b>STANDARD WALL SAW BLADES</b>						
581 24 61-01	581 24 61-02	600	49	5.0	10.0+3.0	60
581 24 62-01	581 24 62-02	650	49	5.0	10.0+3.0	60
581 24 63-01	581 24 63-02	700	49	5.0	10.0+3.0	60
581 24 64-01	581 24 64-02	750	49	5.0	10.0+3.0	60
581 24 65-01	581 24 65-02	800	49	5.0	10.0+3.0	60
581 24 66-01	581 24 66-02	900	49	5.0	10.0+3.0	60
581 24 67-01	581 24 67-02	1000	49	4.7	10.0+3.0	60
581 24 68-01	581 24 68-02	1200	49	4.7	10.0+3.0	60
581 24 69-01	581 24 69-02	1500	49	4.7	10.0+3.0	60
<b>LOW NOISE WALL SAW BLADES</b>						
581 24 61-10	581 24 61-13	600	49	5.0	10.0+3.0	60
581 24 63-08	581 24 63-09	700	49	5.0	10.0+3.0	60
581 24 65-10	581 24 65-11	800	49	5.0	10.0+3.0	60
581 24 66-05	581 24 66-06	900	49	5.0	10.0+3.0	60
581 24 67-04	581 24 67-05	1000	49	4.7	10.0+3.0	60
581 24 68-03	581 24 68-04	1200	49	5.0	10.0+3.0	60

**Husqvarna W 1415 Diagrip™.**

Professional blade for hard concrete &gt;19 kW.

PRODUCT NUMBER – 60 MM CENTRE HOLE	PRODUCT NUMBER – FLUSH CUTTING DRAWING PL3011 FOR WS 440 HF, WS 463, WS 482 HF	DIAMETER, MM	SEGMENT LENGTH, MM	SEGMENT WIDTH, MM	SEGMENT HEIGHT, MM	BORE, MM
<b>STANDARD WALL SAW BLADES</b>						
587 37 86-09	587 37 86-05	600	49	5.0	10.0+3.0	60
587 42 68-02	587 42 68-06	650	49	5.0	10.0+3.0	60
587 88 18-01	587 88 18-06	700	49	5.0	10.0+3.0	60
587 88 21-01	587 37 87-13	750	49	5.0	10.0+3.0	60
587 37 87-04	587 37 87-03	800	49	5.0	10.0+3.0	60
587 84 23-02	587 84 23-07	900	49	5.0	10.0+3.0	60
587 37 89-01	587 37 89-03	1000	49	4.7	10.0+3.0	60
587 37 90-01	587 37 90-03	1200	49	4.7	10.0+3.0	60
587 37 91-01	587 37 91-07	1500	49	4.7	10.0+3.0	60
<b>LOW NOISE WALL SAW BLADES</b>						
587 37 86-09	587 37 86-20	600	49	5.0	10.0+3.0	60
587 88 18-03	587 88 18-09	700	49	5.0	10.0+3.0	60
587 37 87-07	587 37 87-15	800	49	5.0	10.0+3.0	60
587 84 23-04	587 84 23-09	900	49	5.0	10.0+3.0	60
587 37 89-04	587 37 89-08	1000	49	4.7	10.0+3.0	60
587 37 90-04	587 37 90-09	1200	49	5.0	10.0+3.0	60

**Husqvarna W 1420 Diagrip™.**

Professional blades for hard concrete, 13–25 kW saws.

PRODUCT NUMBER – 60 MM CENTRE HOLE	PRODUCT NUMBER – FLUSH CUTTING DRAWING PL3011 FOR WS 440 HF, WS 463, WS 482 HF	DIAMETER, MM	SEGMENT LENGTH, MM	SEGMENT WIDTH, MM	SEGMENT HEIGHT, MM	BORE, MM
<b>STANDARD WALL SAW BLADES</b>						
581 24 72-01	581 24 72-02	600	49	5.0	10.0+3.0	60
581 24 73-01	581 24 73-02	650	49	5.0	10.0+3.0	60
581 24 74-01	581 24 74-02	700	49	5.0	10.0+3.0	60
581 24 75-01	581 24 75-02	750	49	5.0	10.0+3.0	60
581 24 76-01	581 24 76-02	800	49	5.0	10.0+3.0	60
581 24 77-01	581 24 77-02	900	49	5.0	10.0+3.0	60
581 24 78-01	581 24 78-02	1000	49	4.7	10.0+3.0	60
581 24 79-01	581 24 79-02	1200	49	4.7	10.0+3.0	60
581 24 80-01	581 24 80-02	1500	49	4.7	10.0+3.0	60
<b>LOW NOISE WALL SAW BLADES</b>						
581 24 72-05	581 24 72-06	600	49	5.0	10.0+3.0	60
581 24 74-04	581 24 74-05	700	49	5.0	10.0+3.0	60
581 24 76-07	581 24 76-08	800	49	5.0	10.0+3.0	60
581 24 77-05	581 24 77-06	900	49	5.0	10.0+3.0	60
581 24 78-05	581 24 78-04	1000	49	4.7	10.0+3.0	60
581 24 79-06	581 24 79-05	1200	49	5.0	10.0+3.0	60
PRODUCT NUMBER – 60 MM CENTRE HOLE	PRODUCT NUMBER – FLUSH CUTTING DRAWING PL70061 FOR WS 220	DIAMETER, MM	SEGMENT LENGTH, MM	SEGMENT WIDTH, MM	SEGMENT HEIGHT, MM	BORE, MM
<b>WALL SAW BLADES FOR WS 220, LOW-POWERED SAWS</b>						
581 24 72-07	581 24 72-16	600	49	3.8	10.0+3.0	60
581 24 72-15	581 24 72-20	600	49	4.5	10.0+3.0	60
581 24 76-19	581 24 76-20	800	49	3.8	10.0+3.0	60
581 24 77-08	581 24 77-09	900	49	3.8	10.0+3.0	60

## Husqvarna W 1430 Diagrip™.

Professional blades for hard to medium hard concrete, >19 kW saws.

PRODUCT NUMBER - 60 MM CENTRE HOLE	PRODUCT NUMBER - FLUSH CUTTING DRAWING PL3011 FOR WS 440 HF, WS 463, WS 482 HF	DIAMETER, MM	SEGMENT LENGTH, MM	SEGMENT WIDTH, MM	SEGMENT HEIGHT, MM	BORE, MM
<b>STANDARD WALL SAW BLADES</b>						
581 24 83-01	581 24 83-02	600	49	5.0	10.0+3.0	60
581 24 84-01	581 24 84-02	650	49	5.0	10.0+3.0	60
581 24 85-01	581 24 85-02	700	49	5.0	10.0+3.0	60
581 24 86-01	581 24 86-02	750	49	5.0	10.0+3.0	60
581 24 87-01	581 24 87-02	800	49	5.0	10.0+3.0	60
581 24 88-01	581 24 88-02	900	49	5.0	10.0+3.0	60
581 24 89-01	581 24 89-02	1000	49	4.7	10.0+3.0	60
581 24 90-01	581 24 90-02	1200	49	4.7	10.0+3.0	60
581 24 91-01	581 24 91-02	1500	49	4.7	10.0+3.0	60
<b>LOW NOISE WALL SAW BLADES</b>						
581 24 83-08	581 24 83-09	600	49	5.0	10.0+3.0	60
581 24 85-04	581 24 85-05	700	49	5.0	10.0+3.0	60
581 24 87-11	581 24 87-10	800	49	5.0	10.0+3.0	60
581 24 88-05	581 24 88-06	900	49	5.0	10.0+3.0	60
581 24 89-05	581 24 89-06	1000	49	4.7	10.0+3.0	60
581 24 90-05	581 24 90-06	1200	49	5.0	10.0+3.0	60

## Husqvarna W 1105.

Premium blades for hard concrete, <10 kW saws.

PRODUCT NUMBER - 60 MM CENTRE HOLE	PRODUCT NUMBER - FLUSH CUTTING DRAWING PL3011 FOR WS 440 HF, WS 463, WS 482 HF	DIAMETER, MM	SEGMENT WIDTH, MM	BORE, MM
<b>STANDARD WALL SAW BLADES</b>				
581 63 33-01	581 63 33-02	600	4.7	60
581 63 34-01	581 63 34-02	700	4.7	60
581 63 35-01	581 63 35-02	800	4.7	60
581 63 57-01	581 63 57-02	900	4.7	60
581 63 36-01	581 63 36-02	1000	4.5	60
581 63 37-01	581 63 37-02	1200	4.5	60
PRODUCT NUMBER - 60 MM CENTRE HOLE	PRODUCT NUMBER - FLUSH CUTTING DRAWING PL70061 FOR WS 220	DIAMETER, MM	SEGMENT WIDTH, MM	BORE, MM
<b>WALL SAW BLADES FOR WS 220, LOW-POWERED SAWS</b>				
581 63 33-04	581 63 33-08	600	3.8	60
581 63 33-05	581 63 33-09	600	4.5	60
581 63 35-04	581 63 35-06	800	3.8	60
581 63 57-04	581 63 57-06	900	3.8	60

## Husqvarna W 1110.

Premium blades for hard to medium concrete, 10–15 kW saws.

PRODUCT NUMBER - 60 MM CENTRE HOLE	PRODUCT NUMBER - FLUSH CUTTING DRAWING PL3011 FOR WS 440 HF, WS 463, WS 482	DIAMETER, MM	SEGMENT WIDTH, MM	BORE, MM
<b>STANDARD WALL SAW BLADES</b>				
581 63 44-01	581 63 44-02	600	4.7	60
581 63 45-01	581 63 45-02	700	4.7	60
581 63 46-01	581 63 46-02	800	4.7	60
581 63 49-01	581 63 49-02	900	4.7	60
581 63 50-01	581 63 50-02	1000	4.5	60
581 63 51-01	581 63 51-02	1200	4.5	60

## Husqvarna W 1120.

Premium blades for soft concrete, >15 kW saws.

PRODUCT NUMBER - 60 MM CENTRE HOLE	PRODUCT NUMBER - FLUSH CUTTING DRAWING PL3011 FOR WS 440 HF, WS 463, WS 482	DIAMETER, MM	SEGMENT WIDTH, MM	BORE, MM
<b>STANDARD WALL SAW BLADES</b>				
581 63 52-01	581 63 52-02	600	4.7	60
581 63 53-01	581 63 53-02	700	4.7	60
581 63 54-01	581 63 54-02	800	4.7	60
581 63 55-01	581 63 55-02	900	4.7	60
581 63 58-01	581 63 58-02	1000	4.5	60
581 63 56-01	581 63 56-02	1200	4.5	60





**Blades for high- and mid-powered floor saws.**

**MACHINE POWER**

**PRODUCT**

**SEGMENT SHAPE**

**MATERIAL**

Cured concrete, hard  
 Cured concrete, medium  
 Cured concrete, soft  
 Green concrete, hard  
 Green concrete, soft  
 Asphalt, hard  
 Asphalt, soft

**RECOMMENDED EQUIPMENT**

**Blades for low-powered floor saws.**

**MACHINE POWER**

**PRODUCT**

**SEGMENT SHAPE**

**MATERIAL**

Natural stone  
 Reinforced concrete  
 Abrasive material  
 Green concrete  
 Asphalt

**RECOMMENDED EQUIPMENT**

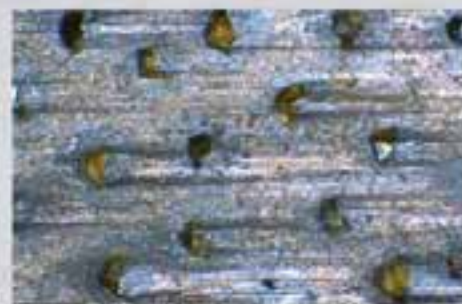
# DIAMOND BLADES FOR FLOOR SAWING

Husqvarna floor sawing diamond blades cover most applications, ranging from sawing asphalt to sawing in heavily reinforced concrete, with equipment ranging from small electric units to large diesel-powered machines. Husqvarna also offers blades developed for slot cutting for electric and electronic cables as installation of traffic loops. The slot cutting blades can also be used in other joint widening applications.

## Revolutionary diamond tool technology for superior cutting capacity and durability.

One of the greatest benefits with the Diagrip™ technology is how fast and smooth the diamond tools go through all types of construction materials. Diagrip™ tools mean trouble-free sawing, especially in heavily reinforced concrete.

The diamonds are specially treated to remain in place in the segments longer, and are distributed optimally, delivering maximum efficiency to every diamond. With Diagrip™ the diamonds are exposed and expended at an even rate, which makes the edge very even and powerful, even when cutting hard materials like reinforced concrete.







F1400 DIAGRIP™

F1100

F600

L600

F400 DIAGRIP™

	25-50 KW		50 → KW		25-50 KW					35 → KW		Electric → 18 KW			→ 25 KW
	F1410	F1440	F1170	F1180	F635	F640	F672	F675	F685	L630	L680	F410	F420	F430	F465
	●●●	●●	-	-	●●●	●●	-	-	-	●●	-	●●●	●●	●	-
	●●●	●●●	-	-	●●	●●●	-	-	-	●●●	-	●●	●●●	●●●	-
	●●	●●●	-	-	●	●●	-	-	-	●●	-	●	●●●	●●●	-
	-	-	-	-	-	-	●●●	●●	-	-	-	-	-	-	●●●
	-	-	-	-	-	-	●●	●●●	-	-	-	-	-	-	●●●
	-	-	●●●	●●	-	-	-	-	●●●	-	●●●	-	-	-	-
	-	-	●●	●●●	-	-	-	-	●●●	-	●●●	-	-	-	-

FS 8400 D, FS 7000 D, FS 5000 D, FS 4800 D

FS 8400 D, FS 7000 D

FS 5000 D, FS 4800 D

FS 5000 D, FS 4800 D

FS 524, FS 513

●●● = Optimal ●● = Good ● = Acceptable - = Not recommended

NEW



ELITE-CUT

VARI-CUT

TACTI-CUT

	3.5-25 KW				3.5-25 KW			3.5-25 KW		
	S35	S45	S65	S85	S45	S65 PLUS	S85	S50 PLUS	S65	S85
	●●●	-	-	-	-	-	-	-	-	-
	●●●	●●●	●●●	-	●●●	●●	-	●●	●●●	-
	●	●●	●●●	●	●●	●●●	●	●●	●●●	●
	-	●	●●	●●	-	●●	●●	-	●●	●●
	-	-	●	●●●	-	●	●●●	-	●	●●●

FS 524/513, FS 413/410 D, FS 400 LV, FS 309/305

●●● = Optimal ●● = Good ● = Acceptable - = Not recommended



**GOLD**  
**SILVER**  
**BRONZE**

See pages 14-15 for more information.

**SPEED BRIDGE** The Elite-Cut S35 blade feature a specially designed Speed Bridge between the segments. This design improves the cutting speed and smoothness even further through reduced lateral friction, better cooling and improved dust evacuation.

## Husqvarna F 1410/ F 1440 Diagrip™.

Cured concrete blades with slotted segment design to maximize performance.

PRODUCT NUMBER	UNDERCUT PROTECTION	DIAMETER, MM	WATER SLOTS	SEGMENT LENGTH, MM	SEGMENT WIDTH, MM	SEGMENT HEIGHT, MM	BORE, MM
<b>HUSQVARNA F 1410</b>							
586 19 90-01	—	500	Narrow	40	4.2	10.0+2.5	25.4
586 19 91-01	—	600	Narrow	40	4.2	10.0+2.5	25.4
586 19 92-01	—	650	Narrow	40	4.2	10.0+2.5	25.4
586 19 93-01	—	700	Narrow	40	4.2	10.0+2.5	25.4
586 19 94-01	—	750	Narrow	40	4.2	10.0+2.5	25.4
586 19 95-01	—	800	Narrow	40	4.8	10.0+2.5	25.4
586 19 96-01	—	900	Narrow	40	4.8	10.0+2.5	25.4
586 19 97-01	—	1000	Wide	40	4.8	10.0+2.5	25.4
586 19 98-01	—	1200	Wide	40	4.5	10.0+2.5	25.4
<b>HUSQVARNA F 1440</b>							
586 20 02-01	—	500	Narrow	40	4.2	10.0+2.5	25.4
586 20 03-01	—	600	Narrow	40	4.2	10.0+2.5	25.4
586 20 04-01	—	650	Narrow	40	4.2	10.0+2.5	25.4
586 20 05-01	—	700	Narrow	40	4.2	10.0+2.5	25.4
586 20 06-01	—	750	Narrow	40	4.2	10.0+2.5	25.4
586 20 07-01	—	800	Narrow	40	4.8	10.0+2.5	25.4
586 20 08-01	—	900	Narrow	40	4.8	10.0+2.5	25.4
586 20 09-01	—	1000	Wide	40	4.8	10.0+2.5	25.4
586 20 10-01	—	1200	Wide	40	4.5	10.0+2.5	25.4

Other dimensions available on request.

## Husqvarna F 1170/ F 1180.

Professional asphalt blades with recessed or lowered segments as undercut protection.

PRODUCT NUMBER	UNDERCUT PROTECTION	DIAMETER, MM	WATER SLOTS	SEGMENT LENGTH, MM	SEGMENT WIDTH, MM	SEGMENT HEIGHT, MM	BORE, MM
<b>HUSQVARNA F 1170</b>							
583 81 17-02	Recessed	600	Wide	40	4.5	8.0+3.0	25.4
582 88 09-02	Recessed	700	Wide	40	4.5	8.0+3.0	25.4
583 81 20-05	Recessed	800	Wide	40	4.5	8.0+3.0	25.4
589 35 44-02	Recessed	900	Wide	40	4.5	8.0+3.0	25.4
<b>HUSQVARNA F 1180</b>							
531 15 90-60	Lowered	600	Narrow	40	4.5	10.0+2.0	25.4
531 15 90-61	Recessed	700	Narrow	40	4.5	10.0+2.0	25.4
531 15 90-62	Recessed	800	Narrow	40	4.5	10.0+2.0	25.4
531 15 90-63	Recessed	900	Narrow	40	4.5	10.0+2.0	25.4

Other dimensions available on request.

## Husqvarna F 635/ F 640.

Cured concrete professional blades with a range of wide and narrow water slots.

PRODUCT NUMBER	UNDERCUT PROTECTION	DIAMETER, MM	WATER SLOTS	SEGMENT LENGTH, MM	SEGMENT WIDTH, MM	SEGMENT HEIGHT, MM	BORE, MM
<b>HUSQVARNA F 635</b>							
531 15 90-23	—	350	Narrow	40	3.2	10.0+3.0	25.4
531 15 90-24	—	400	Narrow	40	3.2	10.0+3.0	25.4
531 15 90-25	—	450	Narrow	40	3.2	10.0+3.0	25.4
531 15 90-26	—	500	Narrow	40	3.6	10.0+3.0	25.4
531 15 90-27	—	600	Wide	40	4.2	10.0+3.0	25.4
531 15 90-29	—	700	Wide	40	4.2	10.0+3.0	25.4
531 15 90-30	—	800	Wide	40	4.5	10.0+3.0	25.4
531 15 90-31	—	900	Wide	40	4.5	10.0+3.0	25.4
531 15 90-32	—	1000	Wide	40	4.5	10.0+3.0	25.4
531 15 90-33	—	1200	Wide	40	4.5	10.0+3.0	25.4
<b>HUSQVARNA F 640</b>							
531 15 90-34	—	300	Narrow	40	2.8	10.0+3.0	25.4
531 15 90-35	—	350	Narrow	40	3.2	10.0+3.0	25.4
531 15 90-36	—	400	Narrow	40	3.2	10.0+3.0	25.4
531 15 90-37	—	450	Narrow	40	3.2	10.0+3.0	25.4
531 15 90-38	—	500	Narrow	40	3.6	10.0+3.0	25.4
531 15 90-39	—	600	Wide	40	4.2	10.0+3.0	25.4
531 15 90-41	—	700	Wide	40	4.2	10.0+3.0	25.4
531 15 90-42	—	800	Wide	40	4.5	10.0+3.0	25.4
531 15 90-43	—	900	Wide	40	4.5	10.0+3.0	25.4
531 15 90-44	—	1000	Wide	40	4.5	10.0+3.0	25.4
531 15 90-45	—	1200	Wide	40	4.5	10.0+3.0	25.4

Other dimensions available on request.

### Husqvarna F 672/F 675.

Professional blades for green concrete, with narrow water slots.

PRODUCT NUMBER	UNDERCUT PROTECTION	DIAMETER, MM	WATER SLOTS	SEGMENT LENGTH, MM	SEGMENT WIDTH, MM	SEGMENT HEIGHT, MM	BORE, MM
<b>HUSQVARNA F 672</b>							
531 15 90-89	—	300	Narrow	40	2.4	8.0+3.0	25.4
531 15 90-91	—	350	Narrow	40	2.8	8.0+3.0	25.4
531 15 90-86	Lowered	300	Narrow	40	2.8	8.0+3.0	25.4
531 15 90-87	Lowered	350	Narrow	40	2.8	8.0+3.0	25.4
<b>HUSQVARNA F 675</b>							
531 15 91-60	—	300	Narrow	40	2.4	8.0+3.0	25.4
531 15 91-62	—	350	Narrow	40	2.8	8.0+3.0	25.4
531 15 91-57	Lowered	300	Narrow	40	2.8	8.0+3.0	25.4
531 15 91-58	Lowered	350	Narrow	40	2.8	8.0+3.0	25.4

Other dimensions available on request.

### Husqvarna F 685.

Professional asphalt blades with recessed or lowered segments as undercut protection.

PRODUCT NUMBER	UNDERCUT PROTECTION	DIAMETER, MM	WATER SLOTS	SEGMENT LENGTH, MM	SEGMENT WIDTH, MM	SEGMENT HEIGHT, MM	BORE, MM
531 15 90-50	Lowered	500	Wide	40	3.8	8.0+3.0	25.4
531 15 90-51	Lowered	600	Wide	40	3.8	8.0+3.0	25.4
531 15 90-52	Recessed	700	Wide	40	4.5	8.0+3.0	25.4
531 15 90-53	Recessed	800	Wide	40	4.5	8.0+3.0	25.4
531 15 90-54	Recessed	900	Wide	40	4.5	8.0+3.0	25.4

Other dimensions available on request.

### Husqvarna L 630/L 680.

Professional blades for slot cutting and traffic loops with sandwich design that helps them retain their shape.

PRODUCT NUMBER	DIAMETER, MM	WATER SLOTS	SEGMENT LENGTH, MM	SEGMENT WIDTH, MM	SEGMENT HEIGHT, MM	BORE, MM
<b>HUSQVARNA L 630</b>						
531 16 15-65	350	Wide	40	6	8.0+3.0	25.4
531 16 15-66	350	Wide	40	8	8.0+3.0	25.4
531 16 15-59	350	Wide	40	10	8.0+3.0	25.4
531 15 92-13	450	Wide	40	6	8.0+3.0	25.4
531 16 15-25	450	Wide	40	8	8.0+3.0	25.4
531 16 15-24	450	Wide	40	10	8.0+3.0	25.4
<b>HUSQVARNA L 680</b>						
531 16 15-03	350	Wide	40	6	8.0+3.0	25.4
531 10 18-79	350	Wide	40	8	8.0+3.0	25.4
531 16 15-02	350	Wide	40	10	8.0+3.0	25.4
531 16 05-02	450	Wide	40	6	8.0+3.0	25.4
531 16 05-03	450	Wide	40	8	8.0+3.0	25.4
531 16 05-04	450	Wide	40	10	8.0+3.0	25.4

Other dimensions available on request.

### Husqvarna F 410/ F 420/ F 430 Diagrip™.

Professional blades for cutting in cured concrete. Low active cutting surface with evenly distributed cutting edges and diamond crystals.

For electric floor saws up to 18 kW.

PRODUCT NUMBER	DIAMETER, MM	WATER SLOTS	SEGMENT LENGTH, MM	SEGMENT WIDTH, MM	SEGMENT HEIGHT, MM	BORE, MM
<b>HUSQVARNA F 410</b>						
581 62 53-01	500	Wide	49	3.8	10.0+3.0	25.4
581 62 54-01	600	Wide	49	3.8	10.0+3.0	25.4
581 62 55-01	700	Wide	49	3.8	10.0+3.0	25.4
581 62 56-01	800	Wide	49	5.0	10.0+3.0	25.4
<b>HUSQVARNA F 420</b>						
581 62 58-01	500	Wide	49	3.8	10.0+3.0	25.4
581 62 59-01	600	Wide	49	3.8	10.0+3.0	25.4
581 62 70-01	700	Wide	49	3.8	10.0+3.0	25.4
581 62 60-01	800	Wide	49	5.0	10.0+3.0	25.4
<b>HUSQVARNA F 430</b>						
581 62 61-01	500	Wide	49	3.8	10.0+3.0	25.4
581 62 64-01	600	Wide	49	3.8	10.0+3.0	25.4
581 62 65-01	700	Wide	49	3.8	10.0+3.0	25.4
581 62 67-01	800	Wide	49	5.0	10.0+3.0	25.4

Other dimensions available on request.



## Husqvarna F 465.

General-purpose professional blade for green concrete, with narrow water slots.  
For low- to medium-powered floor saws.

PRODUCT NUMBER	DIAMETER, MM	WATER SLOTS	SEGMENT LENGTH, MM	SEGMENT WIDTH, MM	SEGMENT HEIGHT, MM	BORE, MM
531 15 90-81	300	Narrow	40	2.4	8.0 + 3.0	25.4
531 15 90-83	350	Narrow	40	2.8	8.0 + 3.0	25.4

Other dimensions available on request.

## Husqvarna Elite-Cut floor saw blades.

Professional blades for easy operation even in heavily reinforced concrete. Innovative segment design for efficient cutting, cooling and slurry evacuation, which increases both cutting speed and service life. Diagrip™ technology featured in S 35, S 45 and S 65.

PRODUCT NUMBER	DIAMETER, MM	BLADE GEOMETRY	SEGMENT SHAPE	SEGMENT HEIGHT, MM	BORE, MM
<b>S 35</b>					
579 81 15-10	300	Segmented	Bridge	15	25.4 / 20
579 81 15-20	350	Segmented	Bridge	15	25.4 / 20
579 81 15-30	400	Segmented	Bridge	15	25.4 / 20
579 82 06-50	450	Segmented	Bridge	15	25.4
579 82 06-60	500	Segmented	Bridge	15	25.4
579 82 06-70	600	Segmented	Bridge	15	25.4
<b>S 45</b>					
579 81 16-10	300	Segmented	Double notch	12	25.4 / 20
579 81 16-20	350	Segmented	Double notch	12	25.4 / 20
579 81 16-30	400	Segmented	Double notch	12	25.4 / 20
579 82 07-50	450	Segmented	Double notch	12	25.4
579 82 07-60	500	Segmented	Double notch	12	25.4
579 82 07-70	600	Segmented	Double notch	12	25.4
<b>S 65</b>					
579 81 19-10	300	Segmented	Double notch	12	25.4 / 20
579 81 19-20	350	Segmented	Double notch	12	25.4 / 20
579 81 19-30	400	Segmented	Double notch	12	25.4 / 20
579 82 08-50	450	Segmented	Double notch	12	25.4
579 82 08-60	500	Segmented	Double notch	12	25.4
579 82 08-70	600	Segmented	Double notch	12	25.4
<b>S 85</b>					
579 81 20-10	300	Segmented	Flat / Flat +	12	25.4 / 20
579 81 20-20	350	Segmented	Flat / Flat +	12	25.4 / 20
579 81 20-30	400	Segmented	Flat / Flat +	12	25.4 / 20
579 80 95-50	450	Segmented	Flat / Flat +	12	25.4
579 80 95-60	500	Segmented	Flat / Flat +	12	25.4
579 80 95-70	600	Segmented	Flat / Flat +	12	25.4

## Husqvarna Vari-Cut floor saw blades.

Premium blades with high cutting speed and wear resistance, providing excellent performance and low tool cost per cut square metre.

PRODUCT NUMBER	DIAMETER, MM	BLADE GEOMETRY	SEGMENT SHAPE	SEGMENT HEIGHT, MM	BORE, MM
<b>S 45</b>					
579 81 74-10	300	Segmented	Turbo/Flat	10	25.4 / 20
579 81 74-20	350	Segmented	Turbo/Flat	10	25.4 / 20
579 81 74-30	400	Segmented	Turbo/Flat	10	25.4 / 20
579 82 09-50	450	Segmented	Turbo/Flat	10	25.4
579 82 09-60	500	Segmented	Turbo/Flat	10	25.4
579 82 09-70	600	Segmented	Turbo/Flat	10	25.4
<b>S 65 PLUS</b>					
587 90 44-01	300	Segmented	Turbo/Flat / Flat +	10	25.4 / 20
587 90 45-01	350	Segmented	Turbo/Flat / Flat +	10	25.4 / 20
587 90 53-01	400	Segmented	Turbo/Flat / Flat +	10	25.4 / 20
587 90 54-01	450	Segmented	Turbo/Flat / Flat +	10	25.4
579 82 10-60	500	Segmented	Turbo/Flat / Flat +	10	25.4
579 82 10-70	600	Segmented	Turbo/Flat / Flat +	10	25.4
<b>S 85</b>					
579 81 77-10	300	Segmented	Flat +	10	25.4 / 20
579 81 77-20	350	Segmented	Flat +	10	25.4 / 20
579 81 77-30	400	Segmented	Flat +	10	25.4 / 20
579 80 96-50	450	Segmented	Flat +	10	25.4
579 80 96-60	500	Segmented	Flat +	10	25.4
579 80 96-70	600	Segmented	Flat +	10	25.4



### Husqvarna Tacti-Cut floor saw blades.

Quality blades optimized for less intensive professional cutting in most materials, providing a good balance between performance and price.

PRODUCT NUMBER	DIAMETER, MM	BLADE GEOMETRY	SEGMENT SHAPE	SEGMENT HEIGHT, MM	BORE, MM
<b>S 50 PLUS</b>					
579 81 56-10	300	Segmented	Flat	13	25.4/20
579 81 56-20	350	Segmented	Flat	13	25.4/20
579 81 56-30	400	Segmented	Flat	13	25.4/20
<b>S 65</b>					
579 81 65-10	300	Jointed segments	Turbo/Flat +	10	25.4/20
579 81 65-20	350	Jointed segments	Turbo/Flat +	10	25.4/20
579 81 65-30	400	Jointed segments	Turbo/Flat +	10	25.4/20
<b>S 85</b>					
579 81 66-10	300	Segmented	Flat +	10	25.4/20
579 81 66-20	350	Segmented	Flat +	10	25.4/20
579 81 66-30	400	Segmented	Flat +	10	25.4/20

**GOLD**

See pages 14–15 for more information.



PRODUCT	XL14			XL10			XL6		
	2000	3000	5000	2000	3000	5000	2000	3000	5000
<b>MATERIAL</b>									
Very hard to hard aggregate concrete	●●●	—	—	●●●	—	—	●●●	—	—
Hard to medium-hard aggregate concrete	—	●●●	—	—	●●●	—	—	●●●	—
Soft to very soft aggregate concrete	—	—	●●●	—	—	●●●	—	—	●●●
<b>RECOMMENDED EQUIPMENT</b>									
	SC 4200, SC 4000			SC 2000e			SC 150		

●●● = Optimal ●● = Good ● = Acceptable — = Not recommended

**Husqvarna XL14/XL10/XL6.**

PRODUCT NUMBER	NAME	DIAMETER, MM	SEGMENT SHAPE	SEGMENT LENGTH, MM	SEGMENT THICKNESS, MM	SEGMENT HEIGHT, MM	NUMBER OF SEGMENTS	BORE
<b>XL14</b>								
542 75 61-13	XL14-2000	350	Flat	40	3.2	9 + 2.5	24	Soff-Cut Triangular
542 75 61-14	XL14-3000	350	Flat	40	3.2	9 + 2.5	24	Soff-Cut Triangular
542 75 61-16	XL14-5000	350	Flat	40	3.2	9 + 2.5	24	Soff-Cut Triangular
<b>XL10</b>								
542 75 61-01	XL10-2000	250	Flat	40	2.6	9 + 2.5	17	Soff-Cut Triangular
542 75 61-02	XL10-3000	250	Flat	40	2.6	9 + 2.5	17	Soff-Cut Triangular
542 75 61-04	XL10-5000	250	Flat	40	2.6	9 + 2.5	17	Soff-Cut Triangular
<b>XL6</b>								
542 77 70-06	XL6-2000	150	Flat	32	2.6	8 + 1.5	12	Soff-Cut Triangular
542 77 70-07	XL6-3000	150	Flat	32	2.6	8 + 1.5	12	Soff-Cut Triangular
542 77 70-09	XL6-5000	150	Flat	32	2.6	8 + 1.5	12	Soff-Cut Triangular

Additional blades on request.



Use Soff-Cut joint protectors at saw-cut intersections prior to cross-cutting in order to prevent the corners from breaking down



A Soff-Cut anti-ravel skid plate comes with every XL blade. This allows for same-day sawing without chipping and spalling.

JOINT PROTECTORS	
Blue, 150 pieces-300 and 350 mm blades	505 48 32-03
Red, 150 pieces-150, 200 and 250 mm blades	505 48 32-02



# DIAMOND TOOLS FOR HANDHELD CUTTING

Husqvarna offers diamond tools for cutting in all types of construction material with all types of handheld equipment, from tools for specialist equipment like ring cutters and chain cutters, to standard diamond blades for more occasional cutting jobs. A diamond blade's properties are determined by the application, the material to be cut and the machine to be used. Therefore, our range of diamond blades are divided in different levels and clearly labelled to make it even easier for you to choose the optimal blade for your type of cutting job.



## Revolutionary diamond tool technology for superior cutting capacity and durability.

With Diagrip™ technology, the diamonds are specially treated to be positioned optimally in the segment, making every diamond work with maximum efficiency. When cutting, the diamonds are exposed and expended at an even rate which makes the edge very even and powerful, especially when working in hard materials like reinforced concrete. This means faster and smoother cutting in all types of construction materials.



See pages 14–15 for more information.



ELITE-CUT

PRODUCT	S 25	S 35	S 45	S 50	S 65	S 85
SEGMENT SHAPE						
MATERIAL						
Hard tiles, porcellanato	●	●	—	—	—	—
Ceramic tiles	●	●	—	—	—	—
Natural stone	●●●	●●●	—	●	—	—
Cured concrete	●●	●●●	●●●	●●●	●●	—
Reinforced concrete	●●	●●	●●●	●●	●●●	—
Brick	●●	●●	●●	●●	●●●	—
Roof tile	●●	●●	●●	●●	●●●	—
Abrasive material	—	—	●	●	●●●	●●
Green concrete	—	—	—	—	●●	●●
Asphalt	—	—	—	—	●	●●●
Iron	—	—	—	—	—	—
Ductile iron	—	—	—	—	—	—

K 760, K 970, K 1270, K 6500, K 3000 Vac, K 3000 Wet, K 40

●●● = Optimal ●● = Good ● = Acceptable — = Not recommended



**SPEED BRIDGE** The Elite-Cut blades now feature a specially designed Speed Bridge between the segments. This design further improves cutting speed and smoothness, through reduced lateral friction, better cooling and improved dust evacuation. The colour of the bridge indicates which material the blade is optimized for.



VARI-CUT					TACTI-CUT				
S 35 TURBO	S 45	S 50	S 65 PLUS	S 85	S 35	S 50	S 50 PLUS	S 65	S 85
•	-	-	-	-	•	-	-	-	-
•	-	-	-	-	•	-	-	-	-
•	-	•	-	-	•	•	•	•	-
•	•	•	•	-	•	•	•	•	-
•	•	•	•	-	•	•	•	•	-
•	•	•	•	-	•	•	•	•	-
•	•	•	•	•	-	•	•	•	•
-	•	•	•	•	-	•	•	•	•
-	-	-	•	•	-	-	-	•	•
-	-	-	•	•	-	-	-	-	•
-	-	-	-	•	-	-	-	-	•
-	-	-	-	-	-	-	-	-	-

K 760, K 970, K 1270, K 6500, K 3000 Vac, K 3000 Wet, K 40

## Husqvarna Elite-Cut power cutter blades.

Professional blades for easy operation even in heavily reinforced concrete. Innovative segment design for efficient cutting, cooling and slurry evacuation, which increases both cutting speed and service life. S25 with turbo jointed segments for applications requiring high-quality finishing of cut.

PRODUCT NUMBER	DIAMETER, MM	BLADE GEOMETRY	SEGMENT SHAPE	SEGMENT HEIGHT, MM	BORE, MM
<b>S 25</b>					
579 81 14-10	300	Jointed segments	Turbo	12	25.4/20
579 81 14-20	350	Jointed segments	Turbo	12	25.4/20
579 81 14-30	400	Jointed segments – silence core	Turbo	12	25.4/20
<b>S 35</b>					
579 81 15-10	300	Segmented	Bridge	15	25.4/20
579 81 15-11	300	Segmented	Bridge	15	20.0
579 81 15-20	350	Segmented	Bridge	15	25.4/20
579 81 15-21	350	Segmented	Bridge	15	20.0
579 81 15-30	400	Segmented	Bridge	15	25.4/20
579 81 15-40	415	Segmented	Bridge	15	25.4
<b>S 45</b>					
579 81 16-10	300	Segmented	Double notch	12	25.4/20
579 81 16-11	300	Segmented	Double notch	12	20.0
579 81 16-20	350	Segmented	Double notch	12	25.4/20
579 81 16-21	350	Segmented	Double notch	12	20.0
579 81 16-30	400	Segmented	Double notch	12	25.4/20
579 81 16-40	415	Segmented	Double notch	12	25.4
<b>S 50</b>					
579 81 18-10	300	Segmented	Bridge	15	25.4/20
579 81 18-11	300	Segmented	Bridge	15	20.0
579 81 18-20	350	Segmented	Bridge	15	25.4/20
579 81 18-21	350	Segmented	Bridge	15	20.0
579 81 18-30	400	Segmented	Bridge	15	25.4/20
582 29 80-01	415	Segmented	Bridge	12	25.4
<b>S 65</b>					
579 81 19-10	300	Segmented	Double notch	12	25.4/20
579 81 19-11	300	Segmented	Double notch	12	20.0
579 81 19-20	350	Segmented	Double notch	12	25.4/20
579 81 19-21	350	Segmented	Double notch	12	20.0
579 81 19-30	400	Segmented	Double notch	12	25.4/20
<b>S 85</b>					
579 81 20-10	300	Segmented	Flat	12	25.4/20
579 81 20-11	300	Segmented	Flat	12	20.0
579 81 20-20	350	Segmented	Flat	12	25.4/20
579 81 20-30	400	Segmented	Flat	12	25.4/20

## Husqvarna Vari-Cut power cutter blades.

Premium blades with high cutting speed and wear resistance, providing excellent performance and low tool cost per cut square metre.

PRODUCT NUMBER	DIAMETER, MM	BLADE GEOMETRY	SEGMENT SHAPE	SEGMENT HEIGHT, MM	BORE, MM
<b>S 35 TURBO</b>					
587 90 57-01	300	Segmented	Turbo	10	25.4/20
587 90 57-11	300	Segmented	Turbo	10	20.0
587 90 58-01	350	Segmented	Turbo	10	25.4/20
587 90 58-21	350	Segmented	Turbo	10	20.0
587 90 59-01	400	Segmented	Turbo	10	25.4/20
<b>S 45</b>					
579 81 7410	300	Segmented	Turbo/Flat	10	25.4/20
579 81 7411	300	Segmented	Turbo/Flat	10	20.0
579 81 7420	350	Segmented	Turbo/Flat	10	25.4/20
579 81 7421	350	Segmented	Turbo/Flat	10	20.0
579 81 7430	400	Segmented	Turbo/Flat	10	25.4/20
<b>S 50</b>					
586 59 55-01	300	Segmented	Turbo/Flat	10	25.4/20
586 59 55-11	300	Segmented	Turbo/Flat	10	20.0
586 59 55-02	350	Segmented	Turbo/Flat	10	25.4/20
586 59 55-21	350	Segmented	Turbo/Flat	10	20.0
586 59 55-03	400	Segmented	Turbo/Flat	10	25.4/20
<b>S 65 PLUS</b>					
587 90 44-01	300	Segmented	Turbo/Flat /Flat +	10	25.4/20
587 90 44-11	300	Segmented	Turbo/Flat /Flat +	10	20.0
587 90 45-01	350	Segmented	Turbo/Flat /Flat +	10	25.4/20
587 90 45-21	350	Segmented	Turbo/Flat /Flat +	10	20.0
587 90 53-01	400	Segmented	Turbo/Flat /Flat +	10	25.4/20
<b>S 85</b>					
579 81 77-10	300	Segmented	Flat /Flat +	10	25.4/20
579 81 77-11	300	Segmented	Flat /Flat +	10	20.0
579 81 77-20	350	Segmented	Flat /Flat +	10	25.4/20
579 81 77-30	400	Segmented	Flat /Flat +	10	25.4/20



**Husqvarna Tacti-Cut power cutter blades.**

Quality blades optimized for less intensive professional cutting in most materials, providing a good balance between performance and price.

PRODUCT NUMBER	DIAMETER, MM	BLADE GEOMETRY	SEGMENT SHAPE	SEGMENT HEIGHT, MM	BORE, MM
<b>S 35</b>					
579 81 57-10	300	Continuous	Turbo	10	25.4/20
579 81 57-11	300	Continuous	Turbo	10	20.0
579 81 57-20	350	Continuous	Turbo	10	25.4/20
<b>S 50 PLUS</b>					
579 81 56-10	300	Segmented	Flat	13	25.4/20
579 81 56-11	300	Segmented	Flat	13	20.0
579 81 56-20	350	Segmented	Flat	13	25.4/20
579 81 56-22	350	Segmented	Flat	13	20.0
579 81 56-30	400	Segmented	Flat	13	25.4/20
<b>S 50</b>					
579 81 64-10	300	Segmented	Flat	10	25.4/20
579 81 64-11	300	Segmented	Flat	10	20.0
579 81 64-20	350	Segmented	Flat	10	25.4/20
<b>S 65</b>					
579 81 65-10	300	Joined segments	Turbo/ Flat +	10	25.4/20
579 81 65-20	350	Joined segments	Turbo/ Flat +	10	25.4/20
<b>S 85</b>					
579 81 66-10	300	Segmented	Flat +	10	25.4/20
579 81 66-20	350	Segmented	Flat +	10	25.4/20



## DIAMOND TOOLS FOR SPECIAL APPLICATIONS

Husqvarna has a long tradition of developing diamond tools for special cutting applications that require operators with special skills. Our innovations in the area of handheld cutting include our ring saws, chainsaw and Cut-n-Break tool, with cutting depths up to 400 mm. R1400 series of ring saw blades has the Diagrip™ technology giving this ring blade a very high cutting speed, long life and a smooth cut.



**RESCUE BLADES**

PRODUCT	VARI-CUT FR3
SEGMENT SHAPE	
<b>MATERIAL</b>	
Cured concrete	●
Reinforced concrete	●
Brick	●
Roof tile	●
Abrasive material	●
Green concrete	●
Asphalt	●
Iron	●●●
Ductile iron	●●●
<b>RECOMMENDED EQUIPMENT</b>	
K 970 Rescue, K 760 Rescue	

- GOLD
- SILVER
- BRONZE

See pages 14–15 for more information.



**RING SAW BLADES**

**BLADES FOR CUT-N-BREAK**

PRODUCT	RING SAW BLADES						BLADES FOR CUT-N-BREAK		
	R 1410 – NEW	R 1420	R 1445	R 820	R 845	R 870	EL 10 CNB	EL 35 CNB	EL 70 CNB
SEGMENT SHAPE									
<b>MATERIAL</b>									
Stone	●●●	●●	●	●●	●	—	●●●	●	—
Concrete, hard	●●●	●●	●●	●●●	●●	—	●●●	●●	—
Concrete, medium	●●●	●●●	●●●	●●●	●●●	—	●	●●●	—
Concrete, soft	●●	●●	●●●	●●	●●●	●	—	●●●	●
Building brick	●	●	●	●	●	●●●	—	●	●●●
Abrasive building block	—	—	—	—	—	●●●	—	●	●●●
<b>RECOMMENDED EQUIPMENT</b>	K 970 Ring, K 6500 Ring, K 3600 MK II						K 3000 Cut-n-Break		

**NEW**



**BLADES FOR K 6500 AND HYDRAULIC CUTTERS**

**DIAMOND CHAINS**

PRODUCT	BLADES FOR K 6500 AND HYDRAULIC CUTTERS		DIAMOND CHAINS				
	S 1410	S 1420	PRO 45	PXC 45	ELC 45	ELC 70	SLC 45
SEGMENT SHAPE							
<b>MATERIAL</b>							
Stone	●●●	—	●●	●●	●●	—	●
Concrete, hard	●●●	●	●●●	●●●	●●	—	●●●
Concrete, medium	●●	●●●	●●●	●●●	●●●	●	●●●
Concrete, soft	●	●●●	●●●	●●●	●●●	●●	●●●
Building brick	—	●●	●●	●●	●	●●●	●
Abrasive building block	—	●	●	—	—	●●●	●
<b>RECOMMENDED EQUIPMENT</b>	K 6500, K 2500		K 6500 Chain, K 970 Chain				

●●● = Optimal ●● = Good ● = Acceptable — = Not recommended



### Husqvarna diamond blades for ring cutters.

A range of professional and premium blades with self sharpen segments, designed to give a free-cutting tool regardless of direction of blade rotation.

PRODUCT NUMBER	DIAMETER, MM	SEGMENT LENGTH, MM	SEGMENT WIDTH, MM	SEGMENT HEIGHT, MM
<b>R 1410 DIAGRIP™</b>				
583 80 23-01	370	33	4.2	9.0
<b>R 1420 DIAGRIP™</b>				
587 02 42-01	370	33	4.2	9.0
<b>R 1445 DIAGRIP™</b>				
587 02 43-01	370	33	4.2	9.0
<b>R 820</b>				
574 83 63-01	370	33	4.2	9.0
<b>R 845</b>				
574 83 63-02	370	33	4.2	9.0
<b>R 870</b>				
574 83 63-03	370	33	4.2	9.0
<b>PRE-CUT RING BLADE</b>				
583 80 23-02	370	33	6.0	9.0

### Husqvarna diamond blades for Cut-n-Break cutters.

Professional blades that cut in stages through walls up to 400 mm thick, with a very low diamond tool investment.

PRODUCT NUMBER	SEGMENT LENGTH, MM	SEGMENT WIDTH, MM	SEGMENT HEIGHT, MM	NUMBER OF DISCS
<b>EL 10 CNB</b>				
574 83 62-01	40	2.4	8.5	2
<b>EL 35 CNB</b>				
574 83 62-02	40	2.4	8.5	2
<b>EL 70 CNB</b>				
574 83 62-03	40	2.4	8.5	2

### Husqvarna diamond blades for K 6500 and hydraulic cutters.

Professional blades providing optimal cutting speed in hard and heavily reinforced concrete. Also available in Pre-Cut versions.

PRODUCT NUMBER	DIAMETER, MM	WATER SLOTS	SEGMENT LENGTH, MM	SEGMENT WIDTH, MM	SEGMENT HEIGHT, MM	BORE, MM
<b>S 1410 DIAGRIP™</b>						
583 80 06-01	415	Narrow	40	3.0	10+2	25.4
<b>S 1420 DIAGRIP™</b>						
589 29 75-01	415	Narrow	40	3.0	10+2	25.4
<b>S 1410 PRE-CUT DIAGRIP™</b>						
583 80 06-02	415	Narrow	40	4.2	10+2	25.4
583 80 06-03	415	Narrow	40	6.0	10+2	25.4
<b>S 1420 PRE-CUT DIAGRIP™</b>						
589 29 75-02	415	Narrow	40	4.2	10+2	25.4

### Husqvarna diamond chains and guide bars for chain cutters.

A range of professional, premium and quality chains for sawing in reinforced concrete and other construction materials in different hardness.

PRODUCT NUMBER	CHAIN PITCH, INCH	CHAIN/BAR LENGTH, MM / INCH	NUMBER OF SEGMENTS	SEGMENT WIDTH, MM
<b>PRO 45</b>				
588 15 04-01	0.444	300 / 12	25	5.7
588 15 04-02	0.444	400 / 16	29	5.7
<b>PXC 45</b>				
531 10 11-85	3/8	350 / 14	32	5.7
<b>ELC 45</b>				
531 10 11-87	3/8	350 / 14	32	5.7
<b>ELC 70</b>				
531 10 11-86	3/8	350 / 14	32	5.7
<b>SLC 45</b>				
531 10 11-84	3/8	350 / 14	32	5.7

GUIDE BARS	
300 mm / 12" (0.444")	587 78 14-01
350 mm / 14" (3/8")	506 34 62-14
400 mm / 16" (0.444")	587 78 14-02

CHAIN ACCESSORIES	
Repair kit for chain segments (0.444")	588 10 68-11
Repair kit for chain links (0.444")	588 10 68-12
Repair kit for chain segments (3/8")	531 10 11-94
Repair kit for chain links (3/8")	531 10 11-95

### Husqvarna Rescue blades.

A layer of vacuum brazed diamonds give the blade an outstanding cutting performance, and is suitable for cutting most materials likely to be encountered in an emergency situation.

PRODUCT NUMBER	DIAMETER, MM	BLADE GEOMETRY
<b>VARI-CUT FR3</b>		
574 85 39-01	300	Segmented
574 85 40-01	350	Segmented
574 85 41-01	400	Segmented

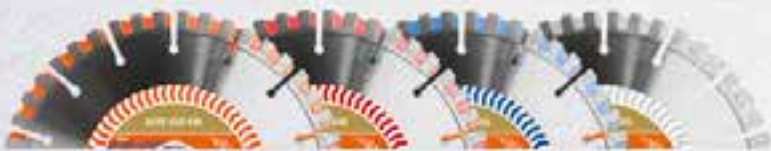
### Husqvarna abrasive discs.

Top-grade abrasive discs, developed specifically for use with handheld power cutters. Can cut practically any material. A good choice for use on steel and other metals.

PRODUCT NUMBER	DIAMETER, MM	BORE, MM	MATERIAL
504 00 01-01	300	20.0	Stone
504 00 01-02	300	22.2	Stone
504 00 02-01	350	20.0	Stone
504 00 02-02	350	22.2	Stone
504 00 02-03	350	25.4	Stone
504 00 03-01	400	20.0	Stone
504 00 03-02	400	22.2	Stone
504 00 03-03	400	25.4	Stone
504 00 04-01	300	20.0	Steel
504 00 04-02	300	22.2	Steel
504 00 05-01	350	20.0	Steel
504 00 05-02	350	22.2	Steel
504 00 05-03	350	25.4	Steel
504 00 07-01	400	20.0	Steel
504 00 07-02	400	22.2	Steel
504 00 07-03	400	25.4	Steel
504 00 08-03	350	25.4	Railway rail
504 00 10-03	400	25.4	Railway rail

# DIAMOND TOOLS FOR ANGLE GRINDERS

Our diamond tools for angle grinders have been developed on the basis of our long experience, which is characterized by continual innovation and improvement. Elite-Cut blades provide maximum cutting speed and life, while Vari-Cut blades are developed specifically for the professional user who wants value for money as well as good performance. Tacti-Cut blades are good complements to the professional blades, giving high cutting speed and a good balance between investment and performance. Husqvarna Rescue blades are developed for cutting a wide variety of materials, without having to change between different blades. For use by trained operators only. The Husqvarna grinding cup wheels are supplied in all required grit sizes for a wide application range.



**SPEED BRIDGE** The Elite-Cut blades now feature a specially designed Speed Bridge between the segments. This design improves the cutting speed and smoothness even further through reduced lateral friction, better cooling and improved dust evacuation. The colour of the bridge indicates which material the blade is optimized for.



See pages 14–15 for more information.



ELITE-CUT

PRODUCT	GOLD						SILVER			S 25
	S 6	S 25	S 35	S 45	S 50	S 65	S 4	S 6		
SEGMENT SHAPE										
MATERIAL										
Hard tiles, porcellanato	●●●	●	—	—	—	—	●●●	●●●	●	
Ceramic tiles	●●●	●	—	—	—	—	●●●	●●●	●	
Natural stone	●●	●●●	●●●	—	●	—	●●	●●	●●●	
Concrete	●	●●	●●●	●●●	●●●	●●	●	●	●●	
Brick	●	●●	●●	●●●	●●●	●●●	●	●	●●	
Abrasive material	—	●	●	●●	●	●●●	—	—	●	
Mortar raking	—	—	—	—	—	—	—	—	—	
Iron	—	—	—	—	—	●	—	—	—	
Ductile iron	—	—	—	—	—	—	—	—	—	

●●● = Optimal ●● = Good ● = Acceptable — = Not recommended



VARI-GRIND

TACTI-GRIND

PRODUCT	G 35	G 45	G 50	G 65	G 45	G 50	G 65
<b>MATERIAL</b>							
Natural stone	●	●	●●	●	●	●●	●
Concrete soft	●●	●●●	●●●	●●●	●●●	●●●	●●●
Concrete medium	●●●	●●●	●●●	●●●	●●●	●●●	●●●
Concrete hard	●●●	●●●	●●	●●	●●●	●●	●●
Bricks	●	●	●●	●●	●	●●	●●

●●● = Optimal ●● = Good ● = Acceptable — = Not recommended

NEW

NEW

NEW

NEW



VARI-CUT

TACTI-CUT

	S 35	S 45	S 50	S 65	S 90	FR3	S 4	S35 TURBO	S 50	S 65
	—	—	—	—	—	—	●●	—	—	—
	—	—	—	—	—	—	●●●	●●	—	—
	●●●	—	●	—	—	—	●●	●●	●	—
	●●●	●●●	●●●	●●	—	●	●	●●	●●●	●●
	●●	●●●	●●●	●●●	—	●	—	●	●●	●●●
	●	●●	●●	●●	—	●	—	●	●●	●●●
	—	—	—	—	●●●	—	—	—	—	—
	—	—	—	●	—	●●●	—	—	—	—
	—	—	—	—	—	●●●	—	—	—	—



## Husqvarna Elite-Cut angle grinder blades.

Professional blades providing maximum cutting speed and life.

PRODUCT NUMBER	DIAMETER, MM	BLADE GEOMETRY	SEGMENT SHAPE	SEGMENT HEIGHT, MM	BORE, MM
<b>S 6</b>					
579 81 88-30	115	Continuous	Flat	10	22.2
579 81 88-40	125	Continuous	Flat	10	22.2
<b>S 25</b>					
579 80 44-30	115	Jointed segments	Turbo	12	22.2
579 80 44-40	125	Jointed segments	Turbo	12	22.2
579 80 44-80	230	Jointed segments	Turbo	12	22.2
<b>S 45</b>					
579 80 50-80	230	Segmented	Bridge	15	22.2
<b>S 50</b>					
579 80 47-30	115	Segmented	Bridge	12	22.2
579 80 47-40	125	Segmented	Bridge	12	22.2
579 80 47-50	150	Segmented	Bridge	12	22.2
579 80 47-60	180	Segmented	Bridge	12	22.2
579 80 47-80	230	Segmented	Bridge	15	22.2
<b>S 65</b>					
579 80 51-80	230	Segmented	Bridge	15	22.2

## Husqvarna Vari-Cut angle grinder blades.

Premium blades with high cutting speed and wear resistance in all materials.

PRODUCT NUMBER	DIAMETER, MM	BLADE GEOMETRY	SEGMENT SHAPE	SEGMENT HEIGHT, MM	BORE, MM
<b>S 4</b>					
579 81 89-30	115	Continuous	Flat	10	22.2
579 81 89-40	125	Continuous	Flat	10	22.2
<b>S 6</b>					
582 21 11-30	115	Continuous	Turbo	10	22.2
582 21 11-40	125	Continuous	Turbo	10	22.2
582 21 11-80	230	Continuous	Turbo	10	22.2
<b>S 25</b>					
579 80 72-30	115	Jointed segments	Turbo	10	22.2
579 80 72-80	230	Jointed segments	Turbo	10	22.2
<b>S 35</b>					
579 80 73-30	115	Segmented	Turbo	10	22.2
579 80 73-40	125	Segmented	Turbo	10	22.2
579 80 73-80	230	Segmented	Turbo	10	22.2
<b>S 45</b>					
579 80 75-80	230	Segmented	Turbo / Flat	10	22.2
<b>S 50</b>					
579 80 79-30	115	Segmented	Turbo / Flat	10	22.2
579 80 79-40	125	Segmented	Turbo / Flat	10	22.2
579 80 79-50	150	Segmented	Turbo / Flat	10	22.2
579 80 79-51	150	Segmented	Turbo / Flat	10	30.0
579 80 79-60	180	Segmented	Turbo / Flat	10	22.2
579 80 79-80	230	Segmented	Turbo / Flat	10	22.2
<b>S 65</b>					
579 80 80-80	230	Segmented	Turbo / Flat / Flat +	10	22.2
<b>S 90</b>					
579 80 81-40	125	Segmented	Flat	10	22.2
<b>FR3 RESCUE</b>					
577 10 36-01	115	Segmented	—	—	22.2
574 85 37-01	125	Segmented	—	—	22.2
574 85 38-01	230	Segmented	—	—	22.2

**Husqvarna Tacti-Cut angle grinder blades.**

Quality blades optimized for less intensive professional cutting in most materials.

PRODUCT NUMBER	DIAMETER, MM	BLADE GEOMETRY	SEGMENT SHAPE	SEGMENT HEIGHT, MM	BORE, MM
<b>S 4</b>					
579 81 96-30	115	Continuous	Flat	10	22.2
579 81 96-40	125	Continuous	Flat	10	22.2
579 81 96-80	230	Continuous	Flat	10	22.2
<b>S 35</b>					
579 82 04-30	115	Continuous	Turbo	10	22.2
579 82 04-40	125	Continuous	Turbo	10	22.2
579 82 04-80	230	Continuous	Turbo	10	22.2
<b>S 50</b>					
579 81 92-30	115	Segmented	Flat	10	22.2
579 81 92-40	125	Segmented	Flat	10	22.2
579 81 92-60	180	Segmented	Flat	10	22.2
579 81 92-80	230	Segmented	Flat	10	22.2
<b>S 65</b>					
579 82 05-30	115	Jointed segments	Turbo/Flat +	9	22.2
579 82 05-40	125	Jointed segments	Turbo/Flat +	9	22.2
579 82 05-80	230	Jointed segments	Turbo/Flat +	9	22.2

**Husqvarna Vari-Grind cup wheels.**

Premium cup wheels for professional use, providing efficient grinding in all materials.

PRODUCT NUMBER	DIAMETER, MM	SEGMENT HEIGHT, MM	CONNECTOR	CUP GEOMETRY
<b>G 35</b>				
579 82 11-01	100	5	22.2 / M	Fan
579 82 11-30	115	5	22.2 / M	Fan
579 82 11-40	125	5	22.2 / M	Fan
579 82 11-50	150	5	19.0	Fan
579 82 11-60	180	5	22.2	Fan
<b>G 45</b>				
579 82 13-30	115	5	22.2 / M	Single row
579 82 13-40	125	5	22.2 / M	Single row
579 82 13-60	180	5	22.2	Single row
<b>G 50</b>				
579 82 14-30	115	5	22.2 / M	Turbo
579 82 14-40	125	5	22.2 / M	Turbo
579 82 14-60	180	5	22.2	Turbo
<b>G 65</b>				
579 82 15-30	115	5	22.2 / M	Double row
579 82 15-40	125	5	22.2 / M	Double row
579 82 15-60	180	5	22.2	Double row

**Husqvarna Tacti-Grind cup wheels.**

Quality cup wheels developed for less intensive use, offering good price performance.

PRODUCT NUMBER	DIAMETER, MM	SEGMENT HEIGHT, MM	CONNECTOR	CUP GEOMETRY
<b>G 45</b>				
582 23 89-30	115	5	22.2	Single row
582 23 89-40	125	5	22.2	Single row
582 23 89-60	180	5	22.2	Single row
<b>G 50</b>				
582 24 22-30	115	5	22.2	Turbo
582 24 22-40	125	5	22.2	Turbo
582 24 22-60	180	5	22.2	Turbo
<b>G 65</b>				
582 24 23-30	115	5	22.2	Double row
582 24 23-40	125	5	22.2	Double row
582 24 23-60	180	5	22.2	Double row