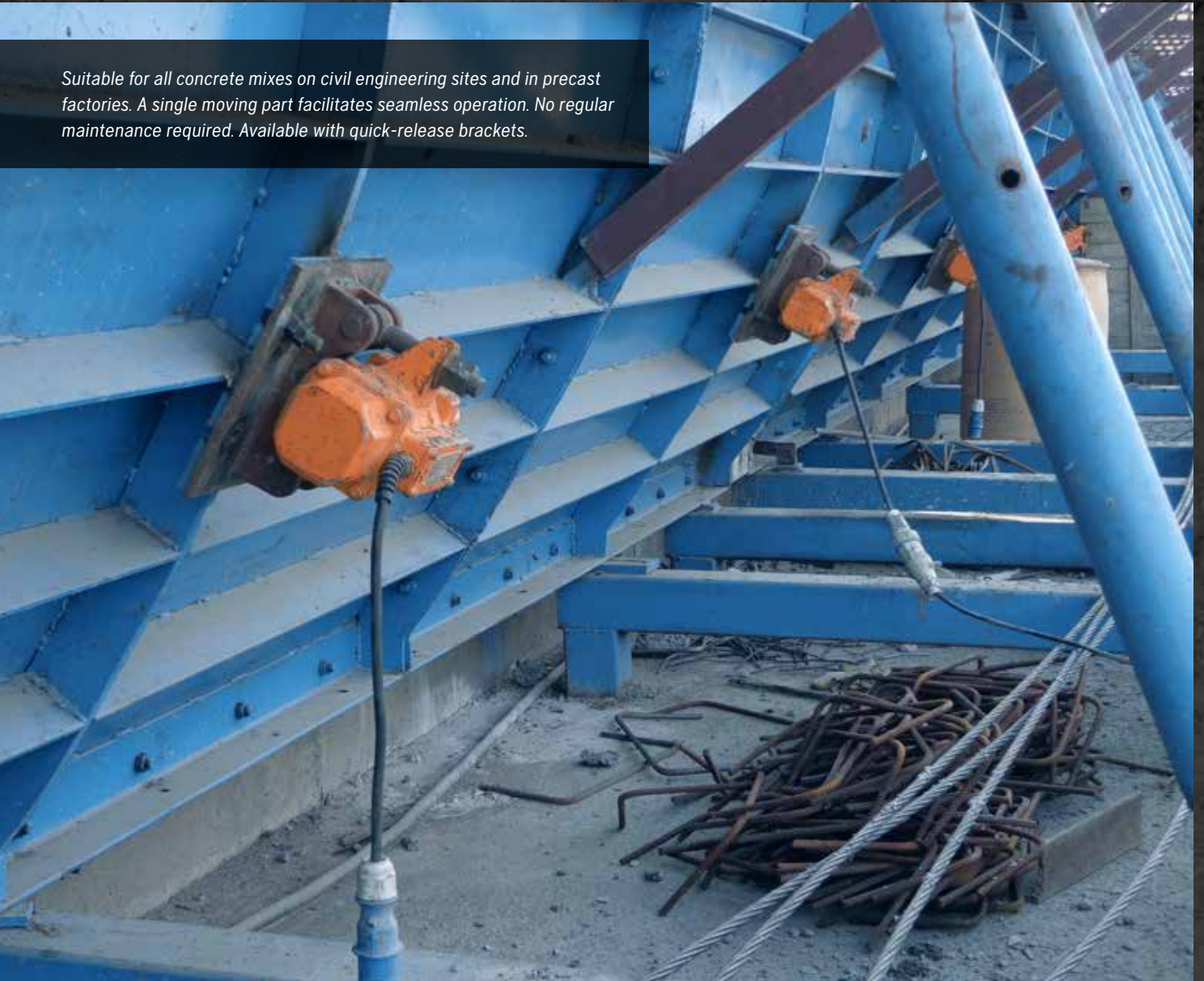


*Suitable for all concrete mixes on civil engineering sites and in precast factories. A single moving part facilitates seamless operation. No regular maintenance required. Available with quick-release brackets.*



## HUSQVARNA EP AND ER SERIES | EXTERNAL VIBRATORS

# MAKE SURE TO GET GOOD EXTERNAL VIBRATIONS

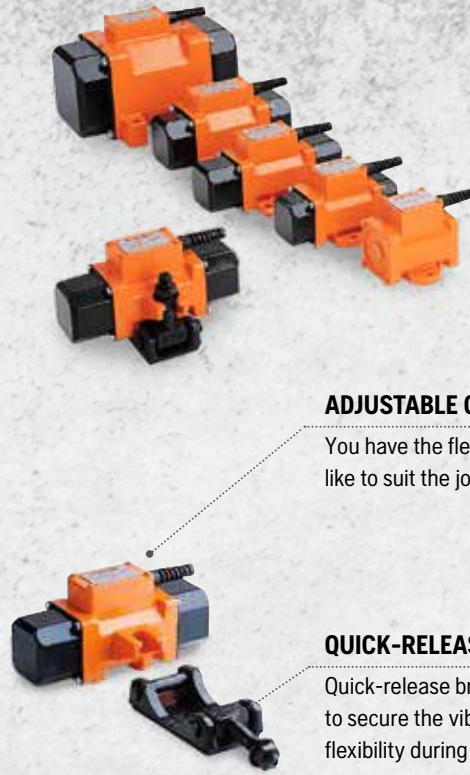
Husqvarna offers a wide range of external vibrators – from high speed pneumatic to normal frequency electric – all with adjustable centrifugal force. To improve flexibility and cost-effectiveness, ER 207 B, ER 407 B and ER 507 B vibrators are mounted on quick-release brackets. This

makes them easier to move, so fewer units are required. High-quality components and materials help keep life cycle and maintenance costs down.



**ER ELECTRIC VIBRATORS**

The ER series provides high centrifugal force. To improve flexibility and cost-effectiveness, ER 207 B, ER 407 B and ER 507 B vibrators are mounted on quick-release brackets. This makes them easier to move, so fewer units are required



**ADJUSTABLE CENTRIFUGAL FORCE**

You have the flexibility to adjust as you like to suit the job at hand.

**QUICK-RELEASE BRACKETS**

Quick-release brackets allow you to secure the vibrator and increase flexibility during use.

**EP PNEUMATIC VIBRATORS**

The EP series is suitable for all concrete mixes on civil engineering sites and in precast factories. A single moving part facilitates seamless operation. Integrated noise reduction makes these vibrators very quiet. Also features quick-release brackets.



HIGH SPEED PNEUMATIC VIBRATORS	EP 601 B	E P371 B	EP 271 B	EP 121 B
Speed, rpm	8800	9350	9350	9000
Max. centrifugal force, N	31500	26800	10350	8100
Air consumption, l/min	1400	1400	1200	1200
Weight, kg	18	16.5	10	9.5
Bracket attachment	VT4	VT4	VT2	VT2

**PART NUMBERS**

	967 97 00-01	967 96 99-01	967 96 98-01	967 96 97-01
Bracket	597 15 71-01	597 15 71-01	597 15 72-01	597 15 72-01

HIGH SPEED ELECTRIC VIBRATORS	ER 507 B	ER 407 B	ER 207 B
Speed, rpm	6000	6000	6000
Max. centrifugal force, N	16000	11000	7400
Voltage, Hz	42V-3-200	42V-3-200	42V-3-200
Intensity, A	23.5	16.5	12.5
Weight, kg	23.2	15.5	10.5
Bracket attachment	VT4	VT4	VT2

**PART NUMBERS**

	967 97 32-01	967 96 94-01	967 97 26-01
Bracket	597 15 71-01	597 15 71-01	597 15 72-01

NORMAL SPEED ELECTRIC VIBRATORS	ER 705	ER 605	ER 505	ER 405	ER 305	ER 205	ER 105
Speed, rpm	3000	3000	3000	3000	3000	3000	3000
Max. centrifugal force, N	16000	12000	7400	6000	3000	1400	500
Intensity at 230V/400V, A	4.20/2.50	3.30/1.90	2.30/1.33	1.80/1.09	0.68/0.39	0.30/0.18	0.16/0.09
Weight, kg	46.80	44.60	22.00	20.00	11.00	4.30	2.70

**PART NUMBERS**

	967 96 96-01	967 97 31-01	967 97 30-01	967 97 29-01	967 96 95-01	967 97 28-01	967 97 27-01
Bracket	-	-	597 26 75-01	597 26 75-01	-	-	-